



PRESENTS
**MUSEUMS &
 GALLERIES**
 2024-2025
**Everyday &
 Christmas**
 CATALOG





Licensed Brands	2
Product Collections	6
Notecards & Wallets	7
Social Stationery	8
Theme Packs	10
Luxury Square Notecard Wallets	12
Square Notecard Wallets	13
Rectangular Notecard Wallets	14
Writing Sets	16
Gift Packaging	17
Gift Wrap	18
Foiled Gift Wrap	20
Gift Bag with Tags	21
Everyday Roll Wrap	24
Tissue Paper	25
Home & Giftware	27
Oven Gloves	28
Adjustable Aprons	30
Tea Towel Sets	32
Cotton Napkins	34
Tote Bags	36
Pouch Bags	39
Travel Mugs	41
Playing Cards	43
Paperweights	44
Gift Stationery	46
Clothbound A5 Journals	47
A5 Luxury Notebooks	48
Lined Journals	51
Stitched Notebooks	52
Mini Notebooks	54
Password Books	55
Bookmarks	56
Calendars & Year Planners	61
2025 Year Planner Diaries	62
Christmas Cards	65
Designer Collection	66
Christmas Fayre	68
V&A Christmas	73
Illustrated Christmas / Christmas Classics	74
The British Library / Money Wallets	76
Christmas Boxed Cards	77
Luxury Square Notecard Wallets	78
Illustrated Christmas Theme Pack / Charity Theme Pack (square)	79
Theme Pack (square) / Charity Theme Pack (small rectangle)	80
Theme Pack (small rectangle) / Charity Theme Pack (5x7" rectangle)	81
Theme Pack (5x7" rectangle) / Theme Pack (large square)	82
Home & Gift Packaging	83
Christmas Sheet Wrap / Christmas Gift Bags with Tags	84
Christmas Gift Tag Sets / Christmas Tissue Paper	86
Christmas Roll Wrap	87
Point of Sale	88



NOTES & QUERIES

PRESENTS

**MUSEUMS &
GALLERIES**

2024-2025
Table of Contents



Notes & Queries, Inc.
7110 Golden Ring Rd, Suite 108
Baltimore, MD 21221
Tel: (410) 682-6102
Fax: (410) 682-5397
Email: EOrders@nandq.com
Website: www.nandq.com

Home of the finest arts brands...

Museums & Galleries curates their products from carefully selected, award-winning artists to produce a wide range of quality licensed products. This includes everyday and Christmas greeting cards as well as a comprehensive collection of gift and stationery items that includes: gift wrap and bags, journals and notebooks, giftware and home goods, and more. The following are some of the featured and newest brands whose images decorate this extensive range of products.



The **Brambly Hedge** book series are filled with beautifully detailed illustrations for Spring, Summer, Autumn, and Winter. Created by Jill Barklem, the hedgerow community of mice have enthralled readers across the globe, with over 7 million copies sold worldwide.



Chris Dunn is a British watercolour artist and illustrator. His anthropomorphic animals, and illustrations for 'The Wind in the Willows' by Eton's Caurette, have gained him a strong following and major gallery representation in Paris.

CHRIS DUNN



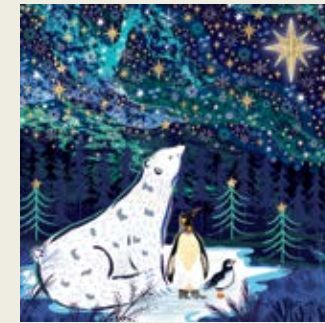
Lucy Grossmith is a Suffolk-based artist and illustrator. Inspired by the countryside and coastline surrounding her, and beyond, Lucy's art celebrates the atmospheric landscapes, flora and fauna of the whole British Isles.

Coast and Country

by Lucy Grossmith



The **British Library** is one of the world's greatest research libraries. It is a place of knowledge and inspiration, encouragement and engagement.



Emma Frances Grant is a British illustrator whose imaginative and decorative designs draw inspiration from her interests in antiques, nature, and all things celestial.

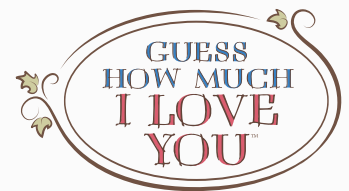


A museum of the world, for the world

Founded in 1753, the **British Museum** was the first national public museum in the world. The collection tells the stories of cultures across the world, from the dawn of human history, over two million years ago, to the present.

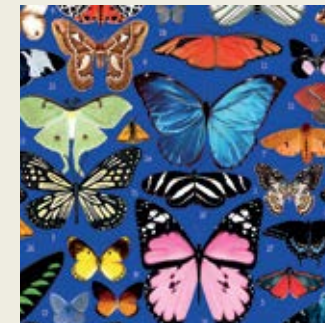
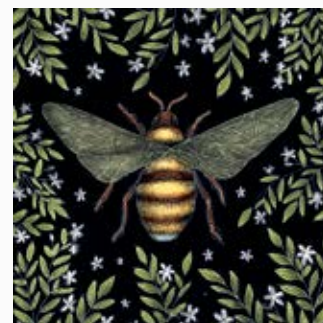


For 25 years Sam McBratney's timeless story, beautifully illustrated by **Anita Jeram** in gentle watercolours, has captured the hearts of children and adults alike. Big Nutbrown Hare's heartwarming declaration 'I love you right up to the moon - AND BACK', has helped this story become a way of saying 'I love you' all over the world.



Catherine Rowe is a British designer inspired by her love of nature and wildlife.

Catherine's designs are luxurious, traditional and classy. Evocative of a Victorian etching, her exquisitely detailed drawings are classical with a modern twist.



Mary Katrantzou is a Greek fashion designer living and working in London. Dubbed "The Queen of Print" by press, Katrantzou's work has changed the face of 21st Century fashion, inspiring high fashion and high street designers alike.

MARY KATRANTZOU

The finest arts brands

MATTHEW WILLIAMSON

Matthew Williamson is a British design house founded in 1997. It is renowned for its use of kaleidoscopic colour, intricate patterns and designs inspired by nature and travel.



TATE's mission is to increase the public's enjoyment and understanding of British art from the 16th century to the present day and of international modern and contemporary art.



The **Natural History Museum** is a world-class visitor attraction and leading science research centre. It cares for more than 80 million specimens and uses its unique collections and unrivalled expertise to tackle the biggest challenges facing the world today.



Transport for London's archives transcend the story of the world's greatest capital city. Celebrating the iconic art and design of the Underground and unique pictures of London, leisure, travel and nature — all life is here



Paddington, the world-famous and much-loved bear, has never been more popular. He appears in our range as illustrated by Peggy Fortnum, the original artist for Michael Bond's books.



Wildlife Photographer of the Year is widely acknowledged as the most prestigious wildlife photography contest in the world. The purpose of the competition is to move hearts and minds, ultimately creating advocates for the planet. Wildlife Photographer of the Year is owned by the Natural History Museum.

Wildlife Photographer of the Year

ROALD DAHL

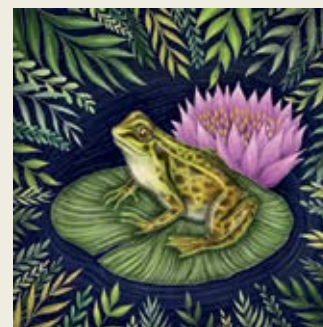
Roald Dahl was a spy, an ace fighter pilot, a chocolate historian and a medical inventor. He was also the author of Charlie and the Chocolate Factory, Matilda, The BFG, and a treasury of original, evergreen, and beloved children's books. He remains for many the world's No.1 storyteller.



Helen Ahpornsiri's unique images are made by hand from hundreds of leaves and flowers, with traditional flower-pressing methods. The plants are then delicately arranged into bold new shapes and forms, capturing a perfect moment in time.



Sarah Campbell is an internationally acclaimed textile designer. Together with her late sister Susan Collier, she founded and ran a groundbreaking and renowned design partnership, creating iconic motifs for the industry's greatest names for more than 50 years. Love of pattern and colour and an inventive freshness are the hallmarks of her work.



Inspired by the V&A
Celebrating creativity, the V&A is the world's leading museum of art, design and performance.
Discover more at vam.ac.uk





Notecards & Wallets

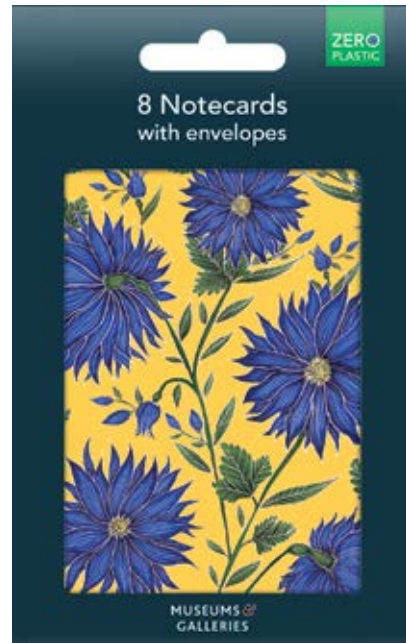


MUSEUMS &
GALLERIES

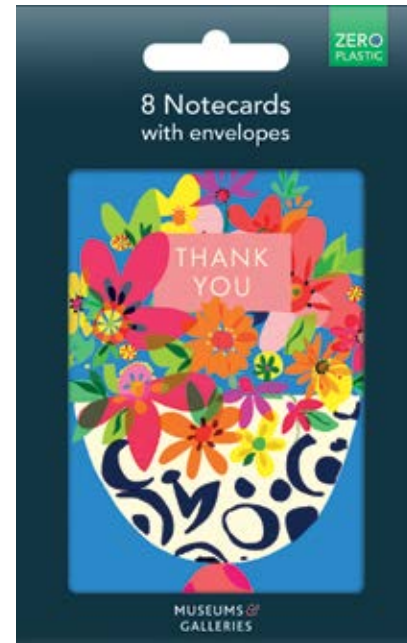
Social Stationery

(Blank / Thank You)

6 x 3.5 x .5" | 8 Notecards | Textured Board | Blank | White Env | Unit: 6 | Trade Price: \$3.475 | Unit Price: \$20.85 | SRP: \$6.95
 Zero Plastic Packaging with Eurohook Header Phasing in Across Range Upon Reprint | Gold or Silver Foil Thank You Text Where Marked



SOC 196 (Blank)
 Catherine Rowe – Blue Flowers



SOC 197 (Thank You)
 Sarah Campbell – Beautiful Blooms



SOC 193 (Thank You)
 NHM – Ulysses Butterfly



SOC 195 (Blank)
 Wild Press – Mint Bloom

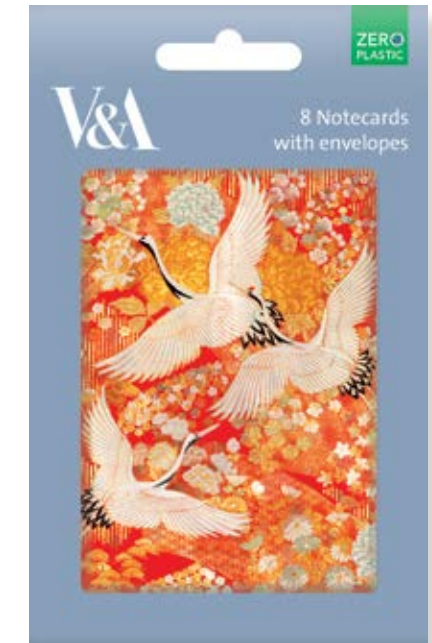
Social Stationery

(Blank / Thank You)

6 x 3.5 x .5" | 8 Notecards | Textured Board | Blank | White Env | Unit: 6 | Trade Price: \$3.475 | Unit Price: \$20.85 | SRP: \$6.95
 Zero Plastic Packaging with Eurohook Header Phasing in Across Range Upon Reprint | Gold or Silver Foil Thank You Text Where Marked



SOC 192 (Thank You)
 Anita Jeram – These are for you...



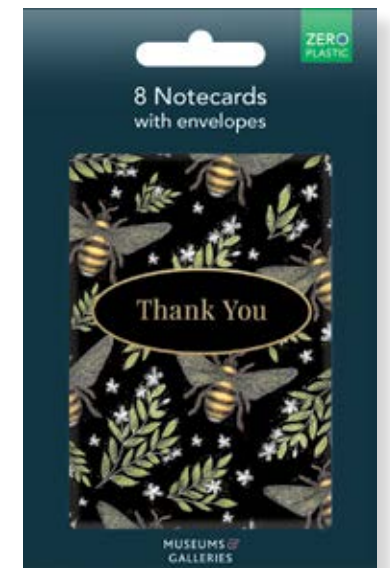
SOC 191 (Blank)
 V&A – Kimono Cranes



SOC 183 (Thank You)
 V&A – Edward Lear Birds



SOC 182 (Thank You)
 Dee Hardwicke – Hares & Berries



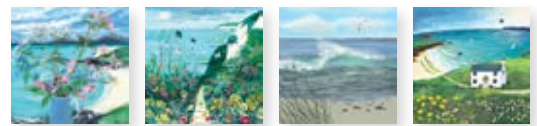
SOC 190 (Thank You)
 Catherine Rowe – Honey Bee Pattern

Theme Packs

5.5 x 5.5 x 1.25" | 20 Cards | White Env | Unit: 6 | Trade Price: \$7.975 | Unit Price: \$47.85 | SRP: \$15.95
5 Each of 4 Designs | Textured Board



Ⓜ MGETE 082
Emille Ferris – Embroidery



Ⓜ MGETE 081
Sea Views



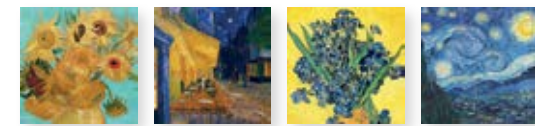
Ⓜ MGETE 047
V&A – Arts & Crafts Birds



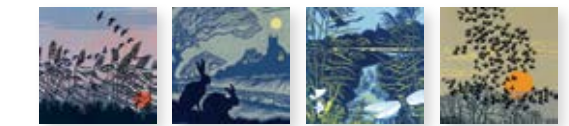
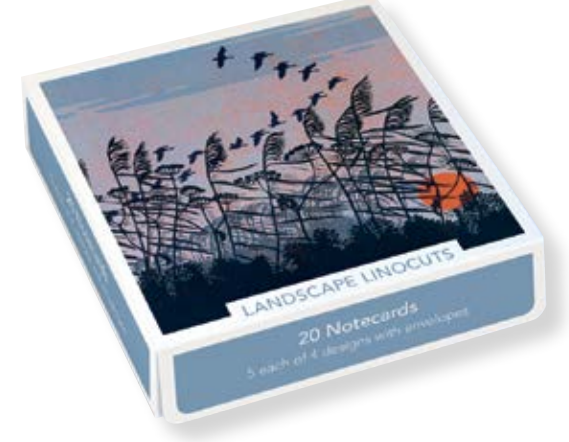
MGETE 052
British Library – Botanical Prints

Theme Packs

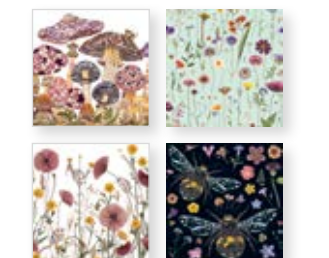
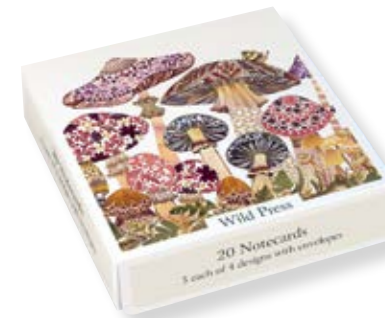
5.5 x 5.5 x 1.25" | 20 Cards | White Env | Unit: 6 | Trade Price: \$7.975 | Unit Price: \$47.85 | SRP: \$15.95
5 Each of 4 Designs | Textured Board



MGETE 055
Vincent van Gogh



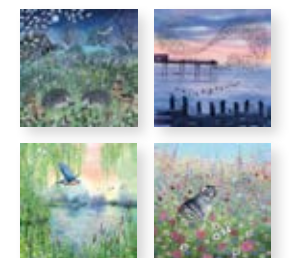
Ⓜ MGETE 056
Robert Gillmore – Landscape Linocuts



Ⓜ MGETE 050
Helen Ahpornsiri – Wild Press







MGETE 053
British Museum – Flowers by Mary Delany



Ⓜ MGETE 057
Lucy Grossmith – Coast & Country

Luxury Square Notecard Wallets

5.5 x 5.5 x 1.25" | 6 Notecards | Blank | White Env | Unit: 6 | Trade Price: \$4.975 | Unit Price: \$29.85 | SRP: \$9.95
 Branded Aperture Outer | Textured Board | Embossed with Foil as Marked |  Gold  Silver  Turquoise  Blue



 **EFE 068**
V&A – Fukusa



 **EFE 029**
V&A – Leicester Wallpaper



 **EFE 031**
V&A – Lacquered Writing Box



 **EFE 072**
Wild Press
Peacock and Cherry Blossom



 **EFE 075**
NHM
Ulysses Butterfly and Lemons



 **EFE 070**
Catherine Rowe
Gardeners' Friends



 **EFE 071**
Catherine Rowe
Lobster Pattern



 **EFE 032**
Matthew Williamson
Stardust



 **EFE 033**
Matthew Williamson
Dragonfly Dance




 **EFE 034**
Wild Press
Bumblebees



 **EFE 073**
Emma Frances Grant
Meditative Moon

Square Notecard Wallets

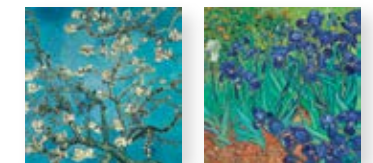
5.5 x 5.5 x 1.25" | 8 Notecards | Blank | White Env | Unit: 6 | Trade Price: \$4.975 | Unit Price: \$29.85 | SRP: \$9.95
 4 Each of 2 Designs |  Textured Board



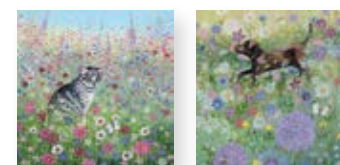
ERE 078
Wild Press – Birds



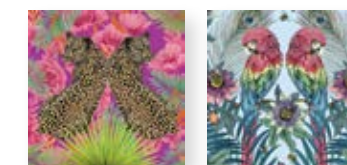
NCW 450148
Josephine Simon – Wild Flowers



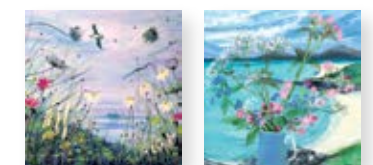
NCW 411712
Vincent van Gogh



 **NCW 450100**
Lucy Grossmith – In the Garden



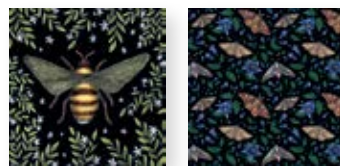
 **ERE 079**
Matthew Williamson – Jungle



 **ERE 046**
Seascape Blooms

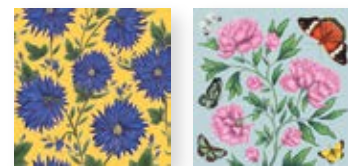
Square Notecard Wallets

5.5 x 5.5 x 1.25" | 6 Notecards | Blank | White Env | Unit: 6 | Trade Price: \$4.975 | Unit Price: \$29.85 | SRP: \$9.95
4 Each of 2 Designs | ☑ Textured Board



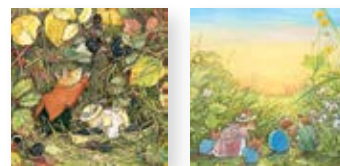
☑ NCW 411699

Catherine Rowe – *Honey Bee & Moths*



☑ NCW 450117

Catherine Rowe – *Floral Designs*



☑ NCW 450094

Brambly Hedge – *Brambly Hedge*

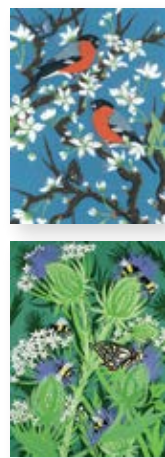
Rectangular Notecard Wallets

7.5 x 5.25 x .5" | 8 Notecards | Blank | White Env | Unit: 6 | Trade Price: \$5.475 | Unit Price: \$32.85 | SRP: \$10.95
4 Each of 2 Designs | ☑ Textured Board



ERB 085

Vincent van Gogh – *Van Gogh at Night*



ERB 025

Fiona Scott-Wilson – *Wildlife Papercuts*

Rectangular Notecard Wallets

7.5 x 5.25 x .5" | 8 Notecards | Blank | White Env | Unit: 6 | Trade Price: \$5.475 | Unit Price: \$32.85 | SRP: \$10.95
4 Each of 2 Designs | ☑ Textured Board



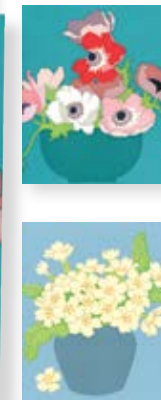
ERB 024

Anonymous – *British Trees & Types of Mushrooms*



NCW 450063

British Library – *Botanical Illustrations*



ERG 026

V&A – *Floral Studies*



☑ NCW 450056

Wild Press



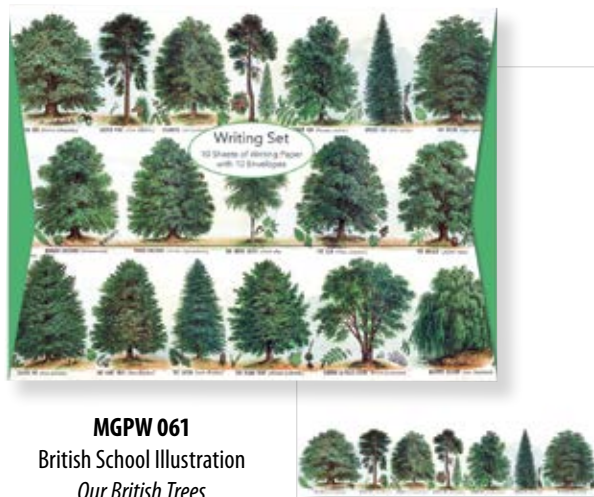
☑ NCW 318844

Gyula Sajo – *Poppies and Sunflowers*

Writing Sets

Our classic writing sets offer best-selling imagery from across the M&G collection of licensed brands. Features a matching *envelope-style* wallet and high quality writing paper with white envelopes.

7.25 x 9.5 x 4.475" | Unit: 6 | Trade Price: \$4.475 | Unit Price: \$26.85 | SRP: \$8.95
10 Sheets Printed Writing Paper (1 Design) | 10 Plain White Laid Envelopes



MGPW 061
British School Illustration
Our British Trees



WS 450179
V&A
Kimono Cranes



WS 450162
Catherine Rowe
Honey Bee

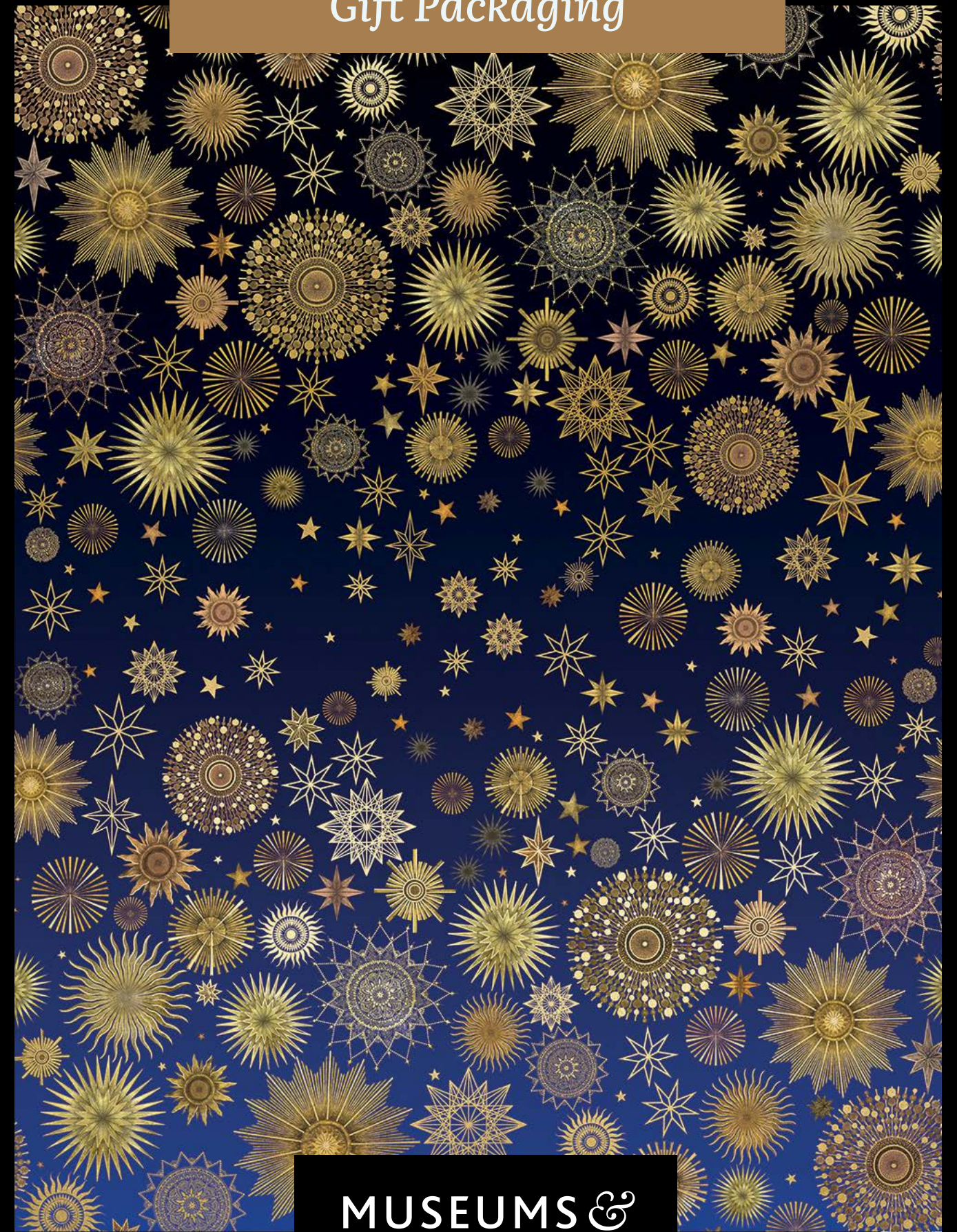


WS 450186
Josephine Simon
Wild Garden



WS 234847
Birds in the Forest

Gift Packaging



**MUSEUMS &
GALLERIES**

Gift Wrap

Museums & Galleries now offers a huge range of gift wrap designs in single sided and foiled formats.

27.5 x 19.5" | Uncoated Paper | Unit: 12 Sheets | Trade Price: \$1.75 | Unit Price: \$21.00 | SRP: \$3.50



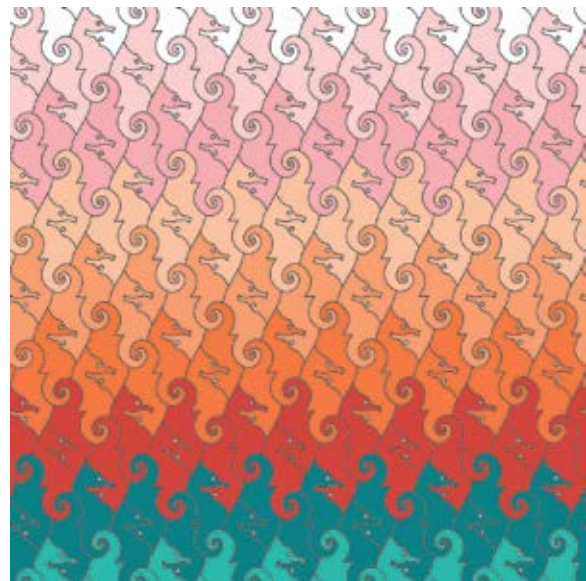
MGWAA 488

Anna Stead – *Enchanted Forest*



MGWAA 491

Angela Harding – *Swallows and Sea*



MGWAA 496

Mary Katrantzou – *Seahorses*



MGWAA 495

Mary Katrantzou – *Butterflies*

Gift Wrap

27.5 x 19.5" | Uncoated Paper | Unit: 12 Sheets | Trade Price: \$1.75 | Unit Price: \$21.00 | SRP: \$3.50



MGWAA 493

Vincent van Gogh – *Vase with Twelve Sunflowers*



MGW 454535

Vincent van Gogh – *Almond Blossom*



MGW 454603



Catherine Rowe – *Blue Flowers*



MGW 372259

The British Museum – *The Great Wave*

Foiled Gift Wrap

27.5 x 19.5" | Uncoated Paper | Foil as Marked  Gold  Silver | Unit: 12 Sheets | Trade Price: \$2.25 | Unit Price: \$27.00 | SRP: \$4.50



 **MGW 454634**
V&A – Kimono Cranes



 **MGW 372266**
V&A – Leicester



 **MGWAF 502**
Mary Katrantzou – Mirror Marble



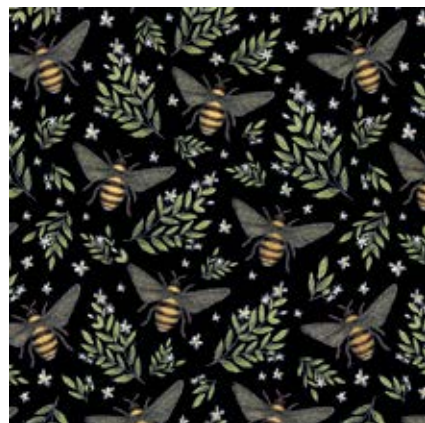
 **MGWAF 500**
Catherine Rowe – Poison



 **MGW 376059**
Matthew Williamson – Stardust



 **MGW 346687**
Matthew Williamson – Jaipur Jem



 **MGW 411385**
Catherine Rowe
Honey Bee Pattern

Gift Bags with Tags

Our range of gift bags features best-selling designs from across our collection, with matching gift packaging items as listed. All new gift bags feature woven paper handles and are now fully recyclable.

Medium: H 9 x W 7 x D 3.875" | Unit: 6 | Trade Price: \$2.975 | Unit Price: \$17.85 | SRP: \$5.95

Large: H 12.375 x W 10.25 x D 5.375" | Unit: 6 | Trade Price: \$3.475 | Unit Price: \$20.85 | SRP: \$6.95



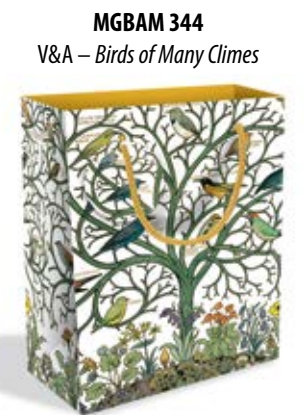
MGBAL 349



MGBAM 340
V&A – Cockatoo and Pomegranate



MGBAL 353



MGBAM 344
V&A – Birds of Many Climes

Matching Tissue Paper: **TIS 489**



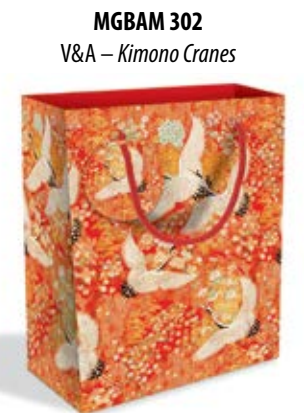
MGBAL 318



MGBAM 314
V&A – Leicester Wallpaper



MGBAL 296



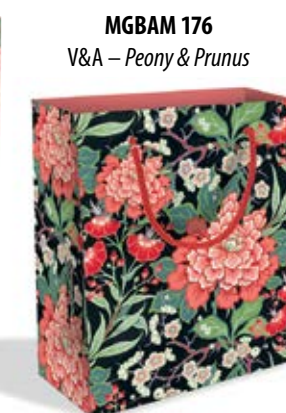
MGBAM 302
V&A – Kimono Cranes

Matching Gift Wrap: **MGW 372266** / Matching Tissue Paper: **TIS 481**

Matching Gift Wrap: **MGW 454634** / Matching Tissue Paper: **TIS 470**



MGBAL 177



MGBAM 176
V&A – Peony & Prunus



MGBAL 350



MGBAM 341
TATE – Carnation, Lily, Rose

Matching Tissue Paper: **TIS 428**

Matching Tissue Paper: **TIS 490**

Gift Bags with Tags

Medium: H 9 x W 7 x D 3.875" | Unit: 6 | Trade Price: \$2.975 | Unit Price: \$17.85 | SRP: \$5.95
 Large: H 12.375 x W 10.25 x D 5.375" | Unit: 6 | Trade Price: \$3.475 | Unit Price: \$20.85 | SRP: \$6.95



MGBAL 299



MGBAM 305
Catherine Rowe – *Honey Bee Pattern*



MGBAL 174



MGBAM 173
The British Museum – *The Great Wave*

Matching Gift Wrap: **MGW 411385** / Matching Tissue Paper: **TIS 473**
 Matching Roll Wrap: **MGWAR 438**

Matching Gift Wrap: **MGW372259** / Matching Tissue Paper: **TIS 427**
 Matching Roll Wrap: **MGWAR 406**



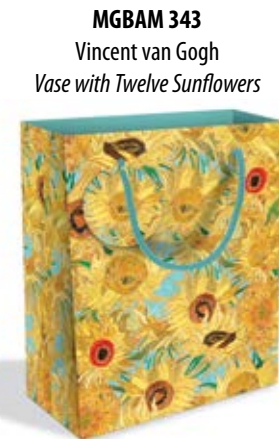
MGBAL 357



MGBAM 348
Angela Harding – *Salt Path*



MGBAL 352



MGBAM 343
Vincent van Gogh
Vase with Twelve Sunflowers

Matching Gift Wrap: **MGWAA 495** / Matching Tissue Paper: **TIS 497**

Matching Gift Wrap: **MGWAA 493** / Matching Tissue Paper: **TIS 492**



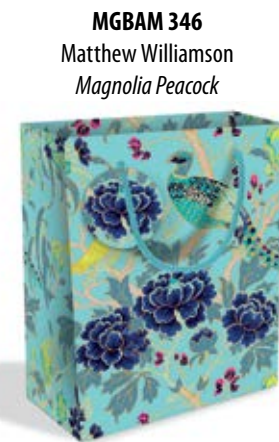
MGBAL 321



MGBAM 317
Josephine Simon – *Wild Garden*



MGBAL 355



MGBAM 346
Matthew Williamson
Magnolia Peacock

Matching Gift Wrap: **MGWAA 469**

Matching Tissue Paper: **TIS 495**

Gift Bags with Tags

Medium: H 9 x W 7 x D 3.875" | Unit: 6 | Trade Price: \$2.975 | Unit Price: \$17.85 | SRP: \$5.95
 Large: H 12.375 x W 10.25 x D 5.375" | Unit: 6 | Trade Price: \$3.475 | Unit Price: \$20.85 | SRP: \$6.95



MGBAL 297



MGBAM 303
Wild Press – *Wildflower Hare*



MGBAL 351



MGBAM 342
Angela Harding – *Salt Path*

Matching Gift Wrap: **MGWAA 491** / Matching Tissue Paper: **TIS 491**



MGBAL 300



MGBAM 306
Matthew Williamson – *Stardust*

Matching Gift Wrap: **MGW 376059** / Matching Tissue Paper: **TIS 474**

Everyday Roll Wrap

Roll Wrap Tube: 27.5 x 2" / Roll: 27.5 x 9.85" | Unit: 6 | Trade Price: \$4.975 | Unit Price: \$29.85 | SRP: \$9.95
 Delivered in a Store-Ready, Tear-Off Dispenser



MGWAR 428
 V&A
Strawberry Thief



MGWAR 406
 The British Museum
The Great Wave



MGWAR 438
 Catherine Rowe
Honey Bee Pattern



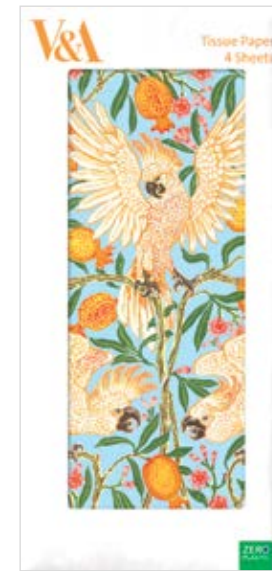
MGWAR 439
 Vincent van Gogh
Almond Branches in Bloom



MGWAR 408
 Peggy Fortnum
Paddington Bear

Tissue Paper

Packaging: 11.5 x 4.5" / Sheet: 27.5 x 19.5" | Unit: 6 | Trade Price: \$2.975 | Unit Price: \$17.85 | SRP: \$5.95
 4 Sheets of Printed Tissue Paper | Zero Plastic Packaging Replacing Cellobag upon Reprint (per design) | Fold-Out Eurohook Hanger



TIS 489
 V&A – Cockatoo and Pomegranate



TIS 481
 V&A – Leicester Wallpaper



TIS 470
 V&A – Kimono Cranes



TIS 428
 V&A – Peony & Prunus



TIS 491
 Angela Harding – Swallows and Sea



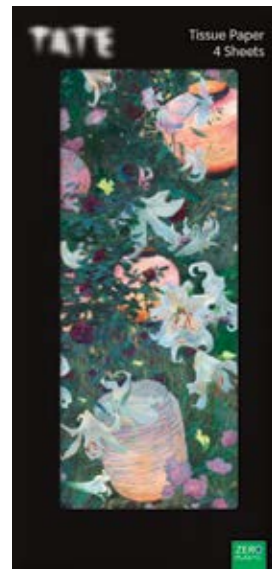
TIS 492
 Vincent van Gogh – Vase with Twelve Sunflowers

Tissue Paper

Packaging: 11.5 x 4.5" / Sheet: 27.5 x 19.5" | Unit: 6 | Trade Price: \$2.975 | Unit Price: \$17.85 | SRP: \$5.95
 4 Sheets of Printed Tissue Paper | Zero Plastic Packaging Replacing Cellobag upon Reprint (per design) | Fold-Out Eurohook Hanger



TIS 497
 Mary Katrantzou – *Butterflies*



TIS 490
 TATE – *Carnation, Lily, Lily, Rose*



TIS 473
 Catherine Rowe – *Honey Bee Pattern*



TIS 427
 The British Museum – *The Great Wave*



TIS 495
 Matthew Williamson – *Magnolia Peacock*



TIS 474
 Matthew Williamson – *Stardust*

Home & Giftware



**MUSEUMS &
 GALLERIES**

Oven Gloves

Forming an exciting quartet of related new homeware products alongside aprons, tea towel sets and napkins, these organic cotton oven gloves feature stunning prints, accent piping and terry-towel inner fabric. With a handy hanging loop, they are both beautiful and useful in the kitchen.

7 x 12.5 x 3.25" (packed) | Unit: 3 | Trade Price: \$15.00 | Unit Price: \$45.00 | SRP: \$29.99

GOTS Certified Organic Cotton | Quilted Outer | Terry Towel Inner | 2 Hand Pockets | Hanging Loop | Machine Washable | Approx Size: 7 x 33"



OGL 027
V&A – Leicester Wallpaper



OGL 028
V&A – Strawberry Thief



OGL 033
Id Press – Wildflower Hare



OGL 030
Catherine Rowe – Blue Flowers

Oven Gloves

7 x 12.5 x 3.25" (packed) | Unit: 3 | Trade Price: \$15.00 | Unit Price: \$45.00 | SRP: \$29.99

GOTS Certified Organic Cotton | Quilted Outer | Terry Towel Inner | 2 Hand Pockets | Hanging Loop | Machine Washable | Approx Size: 7 x 33"



OGL 031
Catherine Rowe – Honey Bee Patter



OGL 032
Catherine Rowe – Lobsters



OGL 035
The British Museum – The Great Wave



OGL 037
Vincent van Gogh – Almond branches in Bloom

Adjustable Aprons

Forming an exciting quartet of related new homeware products alongside tea towels, oven gloves and napkins, these organic cotton adjustable aprons feature beautifully printed fabric and accent colour straps. With handy pockets and an adjustable neck, they make a *practical* statement wherever they're worn.

7.5 x 12 x 1" (packed) | Unit: 3 | Trade Price: \$15.00 | Unit Price: \$45.00 | SRP: \$29.99

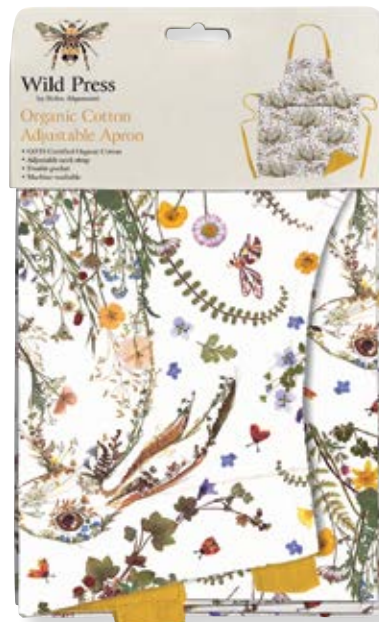
GOTS Certified Organic Cotton | Adjustable Neck Strap | Lined | Front Double Pocket for Utensils | Machine Washable



APR 002
V&A – Leicester Wallpaper



APR 003
V&A – Strawberry Thief



APR 008
Wild Press – Wildflower Hare



APR 005
Catherine Rowe – Blue Flowers

Adjustable Aprons

7.5 x 12 x 1" (packed) | Unit: 3 | Trade Price: \$15.00 | Unit Price: \$45.00 | SRP: \$29.99

GOTS Certified Organic Cotton | Adjustable Neck Strap | Lined | Front Double Pocket for Utensils | Machine Washable



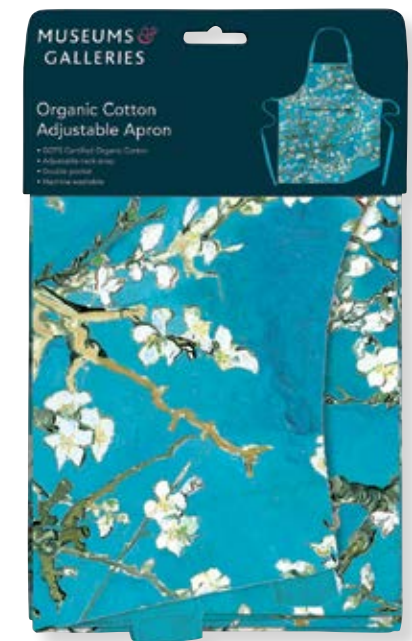
APR 006
Catherine Rowe – Honey Bee Pattern



APR 007
Catherine Rowe – Lobsters



APR 010
The British Museum – The Great Wave



APR 012
Vincent van Gogh – Almond Branches in Bloom

Tea Towel Sets

Forming an exciting quartet of related new homeware products alongside oven gloves, aprons and napkins, these organic cotton tea towel sets feature high quality printed fabric and accent colour straps. With handy pockets and an adjustable neck, they are both practical and stunning in the kitchen.

5.5 x 13.25 x .25" (packed) | Unit: 3 | Trade Price: \$15.00 | Unit Price: \$45.00 | SRP: \$29.99
 GOTS Certified Organic Cotton | Hanging Loop | Machine Washable | Approx Size: 23.5 x 17.75"



TET 015
 V&A – J.H. Dearle designs



TET 016
 V&A – William Morris designs



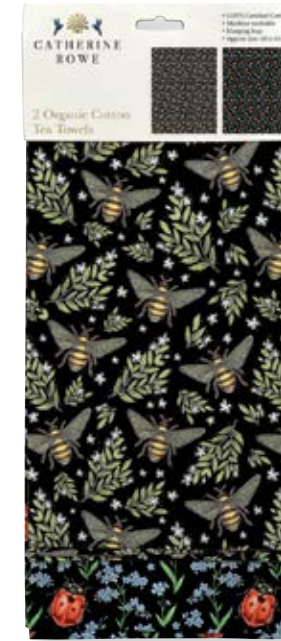
TET 021
 Wild Press – Wildflower Hare & Hedgehogs



TET 018
 Catherine Rowe – Blue Flowers & Medieval Floral

Tea Towel Sets

5.5 x 13.25 x .25" (packed) | Unit: 3 | Trade Price: \$15.00 | Unit Price: \$45.00 | SRP: \$29.99
 GOTS Certified Organic Cotton | Hanging Loop | Machine Washable | Approx Size: 23.5 x 17.75"



TET 019
 Catherine Rowe – Honey Bee Pattern & Ladybirds



TET 020
 Catherine Rowe – Lobsters & Oysters



TET 023
 The British Museum – The Great Wave & Cranes Pattern



TET 025
 Vincent van Gogh – Almond Blossom & Sunflowers

Cotton Napkins

Our new collection of beautifully printed organic cotton napkins features beautiful designs to match tea towel sets, aprons and oven gloves.

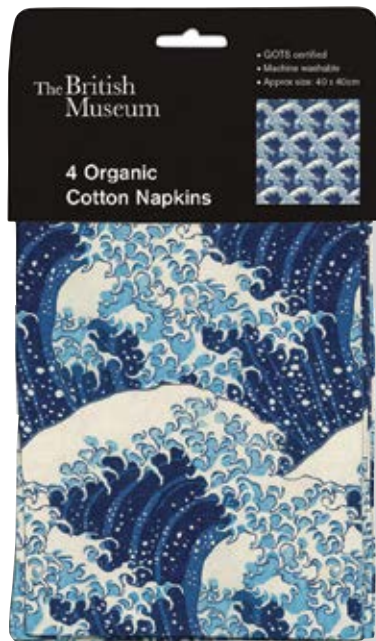
Pack: 5.5 x 9 x .75" (packed) / Napkin: 15.75 x 15.75" | Unit: 3 | Trade Price: \$12.975 | Unit Price: \$38.93 | SRP: \$25.95
4 Cotton Napkins | GOTS Certified Organic Cotton | Machine Washable | Branded Bellyband



CNA 044
V&A – Leicester Wallpaper



CNA 045
V&A – Strawberry Thief



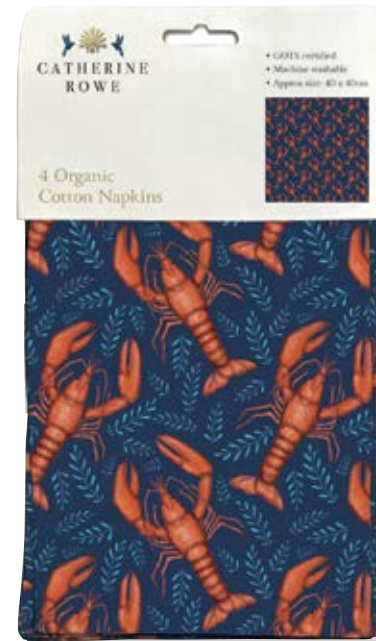
CNA 046
The British Museum – The Great Wave



CNA 040
Catherine Rowe – Blue Flowers

Cotton Napkins

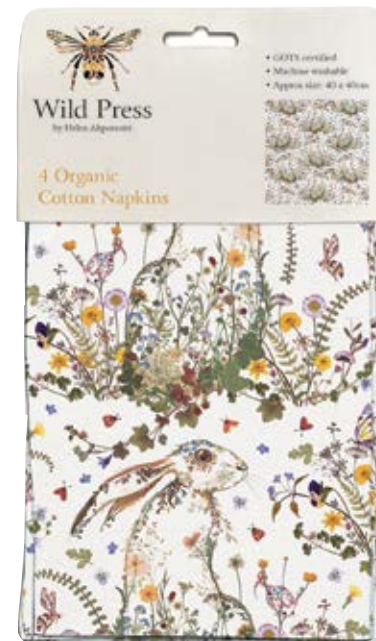
Pack: 5.5 x 9 x .75" (packed) / Napkin: 15.75 x 15.75" | Unit: 3 | Trade Price: \$12.975 | Unit Price: \$38.93 | SRP: \$25.95
4 Cotton Napkins | GOTS Certified Organic Cotton | Machine Washable | Branded Bellyband



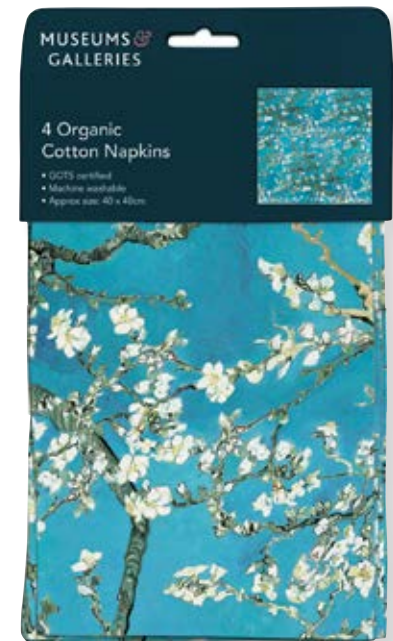
CNA 041
Catherine Rowe – Lobsters



CNA 047
Catherine Rowe – Honey Bee Pattern



CNA 042
Wild Press – Wildflower Hare



CNA 048
Vincent van Gogh – Almond Branches in Bloom

Tote Bags

Our range of premium organic canvas, cotton tote bags has been extended to 16 designs. Made with certified GOTS organic cotton with an internal pocket, these tote bags are strong, stylish, useful and beautiful.

13 x 16.5 x 5.25" excl. handles | Unit: 3 | Trade Price:\$12.975 | Unit Price: \$38.93 | SRP: \$25.95
 GOTS Certified Organic Cotton Canvas | Printed Both Sides | Internal Pouch Pocket | Coordinating Fabric Handles



MGCOT 236
 V&A – Cockatoo and Pomegranate



MGCOT 219
 V&A – Leicester Wallpaper



MGCOT 223
 V&A – Kimono Cranes



MGCOT 220
 V&A – Strawberry Thief

Tote Bags

13 x 16.5 x 5.25" excl. handles | Unit: 3 | Trade Price:\$12.975 | Unit Price: \$38.93 | SRP: \$25.95
 GOTS Certified Organic Cotton Canvas | Printed Both Sides | Internal Pouch Pocket | Coordinating Fabric Handles



MGCOT 205
 V&A – Liar Birds



MGCOT 201
 V&A – Birds of Many Climes



MGCOT 215
 Catherine Rowe – Honey Bee Pattern



MGCOT 239
 Angela Harding – A Wild Silence

Tote Bags

13 x 16.5 x 5.25" excl. handles | Unit: 3 | Trade Price: \$12.975 | Unit Price: \$38.93 | SRP: \$25.95
 GOTS Certified Organic Cotton Canvas | Printed Both Sides | Internal Pouch Pocket | Coordinating Fabric Handles



MGCOT 218
 Vincent van Gogh – *Almond Branches in Bloom*



MGCOT 217
 VWild Press – *Wildflower Hare*



MGCOT 211
 TATE – *Rainbow Painting*



MGCOT 240
 The British Museum – *Sumida River*



MGCOT 222
 The British Museum – *Delany Flowers*

Pouch Bags

7 x 8.5 x .33" | Unit: 3 | Trade Price: \$9.475 | Unit Price: \$28.43 | SRP: \$18.95
 GOTS Certified Organic Cotton Canvas | Black Fabric Lining | Metal Zip | Coordinating Fabric Handle and Piping



COP 317
 V&A – *Kimono Cranes*



COP 318
 V&A – *Strawberry Thief*



COP 320
 Angela Harding – *A Wild Silence*



COP 319
 The British Museum – *Delany Flowers*

Pouch Bags

7 x 8.5 x .33" | Unit: 3 | Trade Price: \$9.475 | Unit Price: \$28.43 | SRP: \$18.95
 GOTS Certified Organic Cotton Canvas | Black Fabric Lining | Metal Zip | Coordinating Fabric Handle and Piping



COP 315
 V&A – Leicester Wallpaper



COP 301
 V&A – Birds of Many Climes



COP 311
 TATE – Rainbow Painting



COP 316
 The British Museum – The Great Wave

Travel Mugs

High quality printed travel mugs made with biodegradable and food-safe cornstarch (PLA) material. Featuring best-selling prints from across the M&G collection with matt accent colour lids, and a translucent heat resistant grip.

3.5 x 3.5 x 5.5" | Unit: 4 | Trade Price: \$12.50 | Unit Price: \$50.00 | SRP: \$24.99
 13.5 fl oz PLA Plant Starch Material Travel Mug | Heat Resistant Grip | Suitable for Hot/Cold Drinks | Screw Top Lid



MUG 938
 V&A – Cockatoo and Pomegranate



MUG 939
 V&A – Leicester Wallpaper



MUG 940
 V&A – Strawberry Thief



MUG 930
 The British Museum – Delany Flowers

Travel Mugs

3.5 x 3.5 x 5.5" | Unit: 4 | Trade Price: \$12.50 | Unit Price: \$50.00 | SRP: \$24.99
 13.5 fl oz PLA Plant Starch Material Travel Mug | Heat Resistant Grip | Suitable for Hot/Cold Drinks | Screw Top Lid



MUG 931
 The British Museum – *The Great Wave*



MUG 932
 Catherine Rowe – *Honey Bee Pattern*



MUG 933
 Vincent van Gogh – *Almond Branches in Bloom*



MUG 936
 The Natural History Museum – *An Array of Marine Life*

Playing Cards

This brand new collection of playing cards make a great design-led gift option. Each pack comprises a beautifully printed protective slip-case box with a quality, colour-customised playing deck inside.

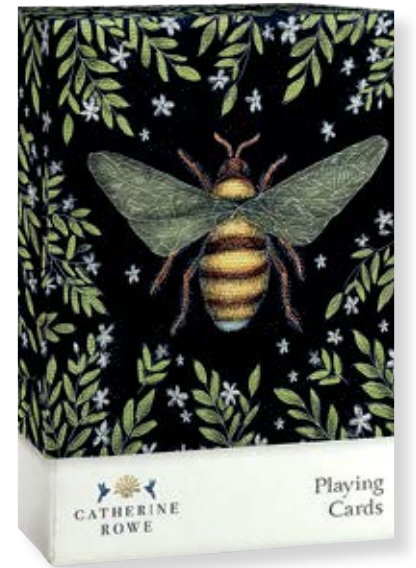
Pack: 3 x 3.5 x 1.25" | Unit: 3 | Trade Price: \$4.975 | Unit Price: \$14.93 | SRP: \$9.95
 Printed Card Slipcase Box Outer | Classic 52-Card Deck w/ Jokers | Royals Coloured to Match Outer Design



PLC 002
 V&A – *Strawberry Thief*



PLC 003
 V&A – *Leicester Wallpaper*



PLC 006
 Catherine Rowe – *Honey Bee*



PLC 007
 Vincent van Gogh – *Almond Branches in Bloom*



PLC 008
 Wild Press – *Wildflower Hare*



PLC 011
 The British Museum – *The Great Wave*

Paperweights

Box: 4.5 x 4.5 x 2.5" | Unit: 3 | Trade Price: \$16.00 | Unit Price: \$48.00 | SRP: \$32.00
 3.25" diameter Crystal Glass Paperweight | Non-Scratch Base | Lined Presentation Box | Branded Bellyband



PAP 516
 Angela Harding – *Young Hare*



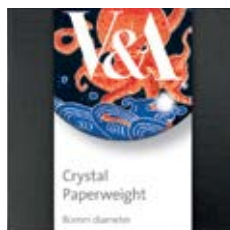
PAP 517
 Colour Wheel



PAP 519
 British Library – *Skull & Flowers*



PAP 503
 Matthew Williamson – *Stardust*



PAP 513
 V&A – *Octopus Curtain Design*



PAP 512
 V&A – *Kimono Cranes*

Paperweights

Box: 4.5 x 4.5 x 2.5" | Unit: 3 | Trade Price: \$16.00 | Unit Price: \$48.00 | SRP: \$32.00
 3.25" diameter Crystal Glass Paperweight | Non-Scratch Base | Lined Presentation Box | Branded Bellyband



PAP 501
 V&A – *Kilburn*



PAP 500
 V&A – *Writing Box*



PAP 515
 Catherine Rowe – *Honey Bee*



PAP 510
 Lucy Grossmith – *Peacock Butterfly*



PAP 506
 The British Museum – *The Great Wave*

Gift Stationery



MUSEUMS &
GALLERIES

Clothbound A5 Journals

New clothbound A5 journals feature tactile printed, organic cotton-wrapped covers and a substantial paper block of 240 lined pages. Colour/foil paper edging and a ribbon bookmark complete the premium specification.

8.5 x 6" | Unit: 3 | Trade Price: \$12.00 | Unit Price: \$36.00 | SRP: \$24.00

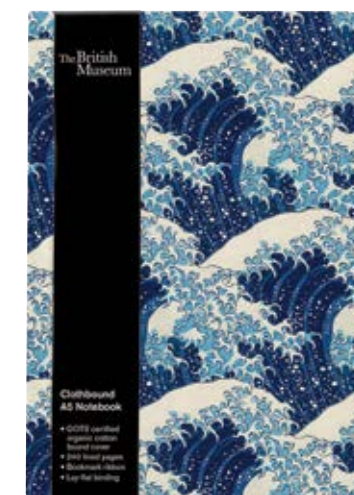
240pp Lined Paper | Organic Cotton-Wrapped Hardback Cover | Rounded Corners | Bookmark Ribbon | Branded Bellyband



CLJ 001
V&A – Kimono Cranes



CLJ 002
V&A – Strawberry Thief



CLJ 004
The British Museum – Wave Pattern



CLJ 005
Wild Press – Mint Meadow



CLJ 006
The Natural History Museum – Ulysses Butterflies

A5 Luxury Notebooks

8.25 x 5.75" | Unit: 3 | Trade Price: \$9.975 | Unit Price: \$29.93 | SRP: \$19.95

160pp Lined Paper | Soft Touch Cover | Gold Foil Cover Detail if Marked | Foil/Colour Paper Edging | Colour Endpapers | Lay-Flat Binding | Branded Bellyband



GAN 647
V&A – Kimono Cranes



GAN 648
V&A – Birds of Many Climes



GAN 661
Wild Press – Cottage Garden Hedgehog



GAN 652
Wild Press – Three Bumblebees

A5 Luxury Notebooks

8.25 x 5.75" | Unit: 3 | Trade Price: \$9.975 | Unit Price: \$29.93 | SRP: \$19.95

160pp Lined Paper | Soft Touch Cover | Gold Foil Cover Detail if Marked | Foil/Colour Paper Edging | Colour Endpapers | Lay-Flat Binding | Branded Bellyband



GAN 665
Transport for London – Kew Gardens; Water Lilies



GAN 666
British Library – Skull & Flowers



GAN 634
TATE – Rainbow Painting (I)



GAN 670
Catherine Rowe – Sakura

A5 Luxury Notebooks

8.25 x 5.75" | Unit: 3 | Trade Price: \$9.975 | Unit Price: \$29.93 | SRP: \$19.95

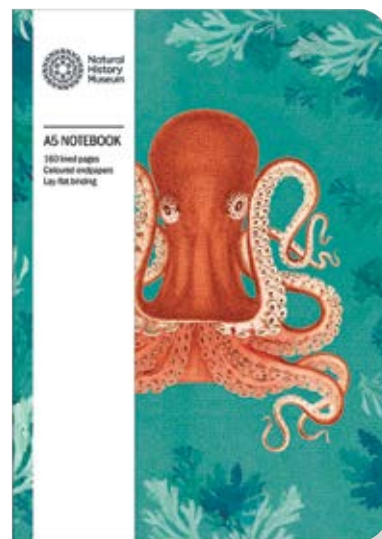
160pp Lined Paper | Soft Touch Cover | Gold Foil Cover Detail if Marked | Foil/Colour Paper Edging | Colour Endpapers | Lay-Flat Binding | Branded Bellyband



GAN 645
Catherine Rowe – Honey Bee Pattern



GAN 650
Catherine Rowe – Blue Flowers



GAN 668
Natural History Museum – Octopus



GAN 656
Natural History Museum – Ulysses Butterfly



GAN 607
The British Museum – The Great Wave

Lined Journals

7 x 5" | Unit: 3 | Trade Price: \$8.475 | Unit Price: \$25.43 | SRP: \$16.95

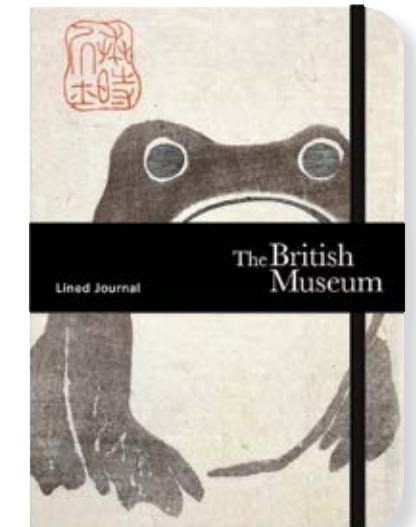
200pp Lined Paper | Hard Cover | Rounded Corners | Elastic Closure | Expanding Pocket | Branded Bellyband



GFG 166
TATE – Carnation, Lily, Lily, Rose



GFG 167
The British Museum – Sumida River



GFG 165
The British Museum – Toad



GFG 163
Wild Press – Wildflower Hare



GFG 160
Josephine Simon – Wild Garden

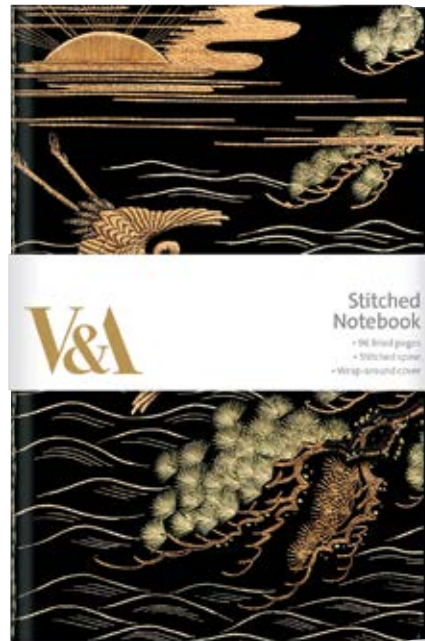


EJ 431581
Catherine Rowe – Honey Bee

Stitched Notebooks

This handy-sized stylish new notebook format is bound with coloured stitching and features a printed wraparound cover. Large enough to write in, but small enough to fit in a pocket or small bag.

6.5 x 4.25" | Unit: 3 | Trade Price: \$4.975 | Unit Price: \$14.93 | SRP: \$9.95



SNB 340
V&A – *Fukusa*



SNB 324
V&A – *Strawberry Thief*



SNB 325
V&A – *Leicester Wallpaper*



SNB 326
V&A – *Kimono Cranes*

Stitched Notebooks

6.5 x 4.25" | Unit: 3 | Trade Price: \$4.975 | Unit Price: \$14.93 | SRP: \$9.95
96pp Lined Paper | Wrap-Around Cover | Rounded Corners | Coloured Stitched Spine | Branded Bellyband



SNB 341
The British Museum – *Feathers*



SNB 330
The British Museum – *The Great Wave*



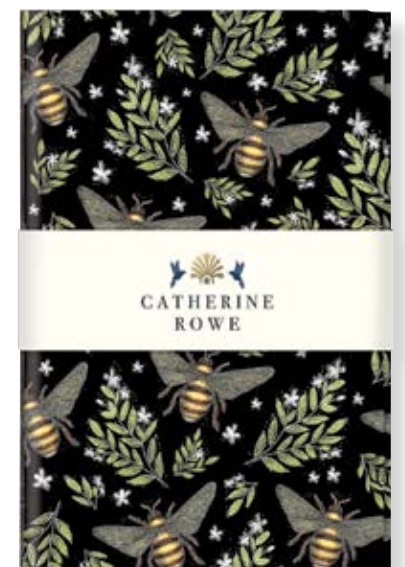
SNB 333
Wild Press – *Three Bumblebees*



SNB 309
Wild Press – *Pteridomania (Fern Fever)*



SNB 310
Wild Press – *Flower Meadow*



SNB 334
Catherine Rowe – *Honey Bee Pattern*

Mini Notebooks

5 x 3.5 x .5" | Unit: 6 | Trade Price: \$2.975 | Unit Price: \$17.85 | SRP: \$5.95
112pp Lined Paper | Soft Cover



GNS 253
Natural History Museum – *Ulysses Butterfly*



GNS 261
V&A – *Garden of Eden*



GNS 262
V&A – *Kimono Cranes*



GNS 263
V&A – *Octopus Curtain Design*



GNS 264
V&A – *Hiroshige Butterflies*

Password Books

7 x 5" | Unit: 3 | Trade Price: \$9.475 | Unit Price: \$28.43 | SRP: \$18.95
132pp | Hard Cover | Storage Pocket | Home & Utilities, Network Settings and Notes Section | Tabbed Alphabet Password Section | Bookmark Ribbon



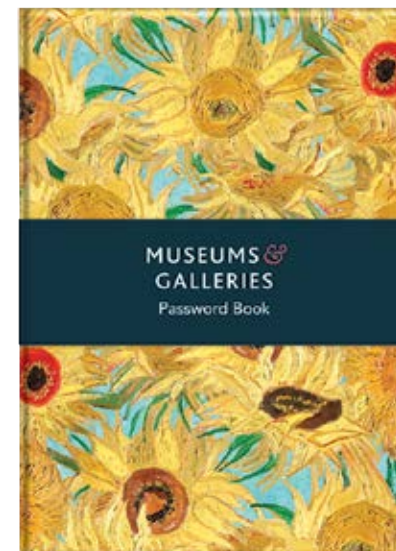
PSW 122
Peggy Fortnum – *Paddington*



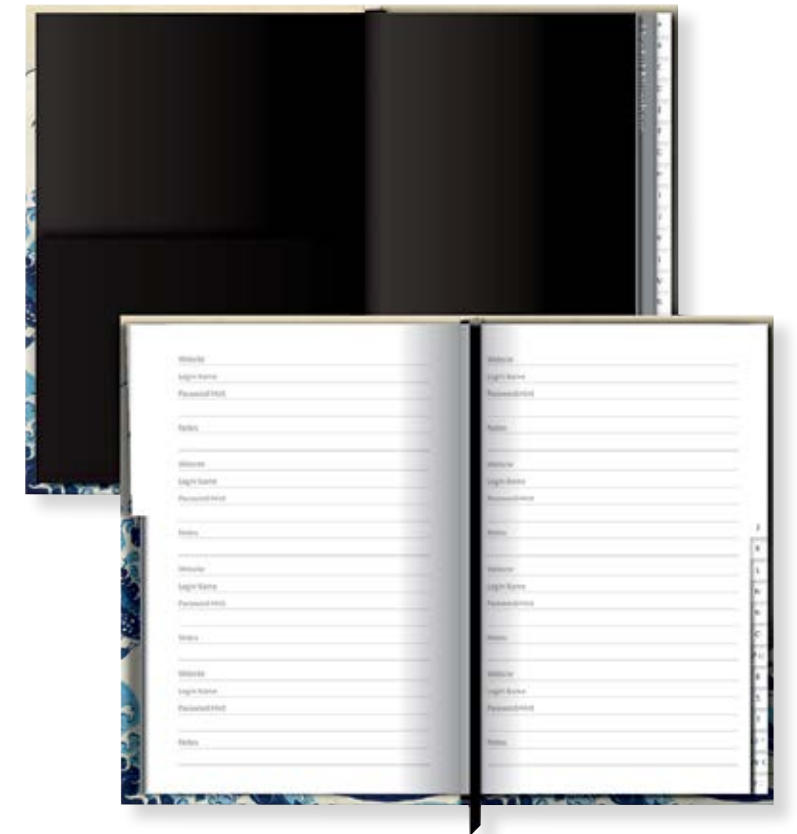
PSW 115
The British Museum – *The Great Wave*



PSW 116
Catherine Rowe – *Honey Bee Pattern*



PSW 123
Vincent van Gogh – *Vase with Twelve Sunflowers*



Bookmarks

All new bookmarks are supplied with a colour accent ribbon and produced on a durable FSC-accredited card material.

6.25 x 2" | Unit: 12 | Trade Price: \$1.475 | Unit Price: \$17.70 | SRP: \$2.95

Durable Printed Material | Coordinating Ribbon (colour may occasionally vary from shown) | Text Printed on Reverse



MGBM 457
V&A – *Kimono Cranes*



MGBM 458
V&A – *Leicester Wallpaper*



MGBM 459
V&A – *Mallow*



MGBM 462
V&A – *Rows of Crocuses*



MGBM 414
V&A – *Kilburn Seaweed*



MGBM 314
V&A – *Almond Blossom & Swallow*



MGBM 315
V&A – *The Owl*



MGBM 479
Natural History Museum – *Tiger*

Bookmarks

6.25 x 2" | Unit: 12 | Trade Price: \$1.475 | Unit Price: \$17.70 | SRP: \$2.95

Durable Printed Material | Coordinating Ribbon (colour may occasionally vary from shown) | Text Printed on Reverse



MGBM 480
Natural History Museum
An Array of Marine Life



MGBM 481
Natural History Museum
Ulysses Butterfly



MGBM 375
Natural History Museum
Dinosaurs



MGBM 367
Paddington
Paddington Reading



MGBM 368
Paddington
Three Paddingtons



MGBM 288
British Library
The Cat Who Walked by Himself



MGBM 260
British Library
Owl



MGBM 488
Sarah Campbell Designs
Paws for Thought



MGBM 489
Sarah Campbell Designs
Glasshouse Gardener

Bookmarks

6.25 x 2" | Unit: 12 | Trade Price: \$1.475 | Unit Price: \$17.70 | SRP: \$2.95

Durable Printed Material | Coordinating Ribbon (colour may occasionally vary from shown) | Text Printed on Reverse



MGBM 443
Sarah Campbell Designs
Folk Birds



MGBM 483
Catherine Rowe
Medieval Floral



MGBM 484
Catherine Rowe
Blue Flowers



MGBM 450
Catherine Rowe
Honey Bee Pattern



MGBM 415
Roald Dahl
Matilda



MGBM 485
Wild Press
Floral Swirl



MGBM 486
Wild Press
Mint Meadow



MGBM 487
Wild Press
Peacock & Cherry Blossoms

Bookmarks

6.25 x 2" | Unit: 12 | Trade Price: \$1.475 | Unit Price: \$17.70 | SRP: \$2.95

Durable Printed Material | Coordinating Ribbon (colour may occasionally vary from shown) | Text Printed on Reverse



MGBM 476
The British Museum
Sumida River



MGBM 478
The British Museum
Feathers of a Peacock



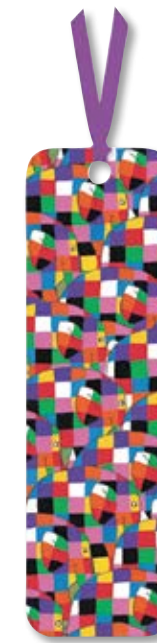
MGBM 354
The British Museum
The Great Wave



MGBM 355
The British Museum
Delany Flowers



MGBM 472
Brambly Hedge
Snoozing under the Bluebells



MGBM 482
Elmer
Elmer



MGBM 463
Josephine Simon
Wild Garden



MGBM 464
Vincent van Gogh
Almond Branches in Bloom

Bookmarks

6.25 x 2" | Unit: 12 | Trade Price: \$1.475 | Unit Price: \$17.70 | SRP: \$2.95

Durable Printed Material | Coordinating Ribbon (colour may occasionally vary from shown) | Text Printed on Reverse



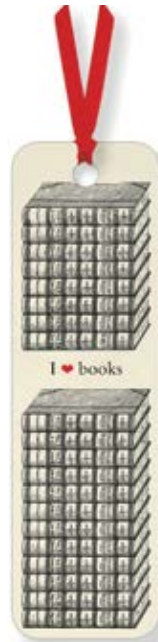
MGBM 465
Vincent van Gogh
Vase with Twelve Sunflowers



MGBM 466
The Boy's Own Paper
Our British Forest Trees



MGBM 467
C.R. Mackintosh
Anemones



MGBM 295
I love books



MGBM 268
Butterflies



MGBM 370
Dee Hardwicke
Hares & Berries



MGBM 269
Botanical Illustration



MGBM 272
I love to ride my bicycle

Calendars & Year Planners



**MUSEUMS &
GALLERIES**

2025 Year Planner Diaries

6.5 x 3.5" | 2025 Planner | Unit: 6 | Trade Price: \$3.975 | Unit Price: \$23.85 | SRP: \$7.95
 Tri-fold cover to act as a page marker, which includes full year-view calendar



YPD 533
 V&A – *Mallow*



YPD 534
 V&A – *Detail from a Fukusa*



YPD 535
 V&A – *Embroidered Floral*



YPD 532
 Lucy Grossmith – *Inside the Glasshouse*

2025 Year Planner Diaries

6.5 x 3.5" | 2025 Planner | Unit: 6 | Trade Price: \$3.975 | Unit Price: \$23.85 | SRP: \$7.95
 Tri-fold cover to act as a page marker, which includes full year-view calendar



YPD 536
 Annie Soudain – *Foxgloves and Finches*



YPD 537
 Wild Press – *Mint Meadow*



YPD 538
 Sarah Campbell – *Paws for Thought*



YPD 539
 William Ireland – *Arbour*



YPD 540
 Chris Dunn – *Wind in the Willows*



YPD 541
 Ravillious – *Ironbridge Interior*



Christmas Cards



MUSEUMS &
GALLERIES

Designer Collection

Featuring designs by Matthew Williamson, Winter Wild Press, Emma Frances Grant, and Catherine Rowe, each capsule range has its own size, finish and card branding to suit the designers' style, packaged in smart *Designer Collection* card outers.

MATTHEW WILLIAMSON

6.5" Square | Textured Board | Foil as marked | White Env | Pack of 5 | Unit: 6 | Trade Price: \$4.975 | Unit Price: \$29.85 | SRP: \$9.95
 Inside Greeting Reads: 'Merry Christmas and a Happy New Year'

WINTER WILD PRESS

5.125" Square | Textured Board | White Env | Pack of 8 | Unit: 6 | Trade Price: \$4.975 | Unit Price: \$29.85 | SRP: \$9.95
 Inside Greeting Reads: 'Season's Greetings'

EMMA FRANCIS GRANT

6.5" Square | Textured Board | Gold Foil | White Env | Pack of 5 | Unit: 6 | Trade Price: \$4.975 | Unit Price: \$29.85 | SRP: \$9.95
 Inside Greeting Reads: 'Merry Christmas and a Happy New Year'

CATHERINE ROWE

6.5" Square | Blank | Textured Board | White Env | Pack of 5 | Unit: 6 | Trade Price: \$4.975 | Unit Price: \$29.85 | SRP: \$9.95
 Inside Greeting Reads: 'Merry Christmas and a Happy New Year'



MWH X 375 PK
 Matthew Williamson – Meerkats



MWH X 376 PK
 Matthew Williamson – Snow Leopard



MWH X 377 PK
 Matthew Williamson – Snowflake



DCE X 202 PK
 Wild Winter Press – Winter Robin



DCE X 204 PK
 Wild Winter Press – Winter Hare



DCE X 205 PK
 Wild Winter Press – Winter Mice

Designer Collection

See page 66 for pricing.



DCE X 203 PK
 Wild Winter Press – Squirrel



FGH X 207 PK
 Emma Frances Grant – King of the Forest



FGH X 208 PK
 Emma Frances Grant – Winter Woodland



FGH X 209 PK
 Emma Frances Grant – The Stargazers



FGH X 206 PK
 Emma Frances Grant – The Night before Christmas



DCH X 198 PK
 Catherine Rowe – Christmas Sausage



DCH X 199 PK
 Catherine Rowe – Catch a Falling Star



DCH X 200 PK
 Catherine Rowe – Dashing through the Snow



DCH X 196 PK
 Catherine Rowe – Svalbard Star

Christmas Fayre

Our fresh and crafty boutique range of contemporary illustrators and artists is perfect for those who love an original and crafty Christmas. We introduce five exciting new artists for 2024.

5.125" Square | Textured Board | White Env | Pack of 8 | Unit: 6 | Trade Price: \$4.975 | Unit Price: \$29.85 | SRP: \$9.95
 Inside Greeting Reads: 'Merry Christmas and a Happy New Year'



CFE X 194 PK
 Ag Jatkowska – *Decorating the Tree*



CFE X 191 PK
 Ag Jatkowska – *Bringing Home the Tree*



CFE X 192 PK
 Ag Jatkowska – *Christmas Bike*



CFE X 193 PK
 Ag Jatkowska – *Christmas Skating*



CFE X 195 PK
 Jack Oldfield – *Campervan Christmas*



CFE X 196 PK
 Lindsey Olivia – *Christmas Deliveries*



CFE X 197 PK
 Robert McPhillips – *Polar Bears*



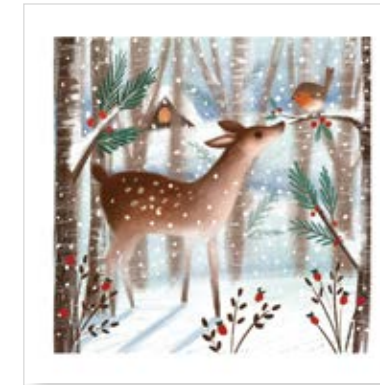
CFE X 198 PK
 Robert McPhillips – *Christmas Wish*



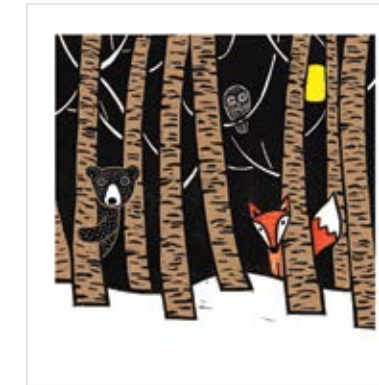
CFE X 199 PK
 Catherine Worsley – *A Winter's Tail*

Christmas Fayre

5.125" Square | Textured Board | White Env | Pack of 8 | Unit: 6 | Trade Price: \$4.975 | Unit Price: \$29.85 | SRP: \$9.95
 Inside Greeting Reads: 'Merry Christmas and a Happy New Year'



CFE X 200 PK
 Catherine Worsley – *Snowy Greeting*



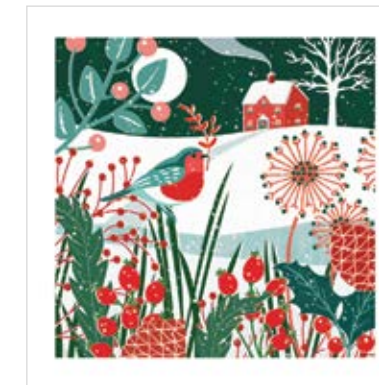
CFE X 204 PK
 Kat Lendacka – *Winter Wood*



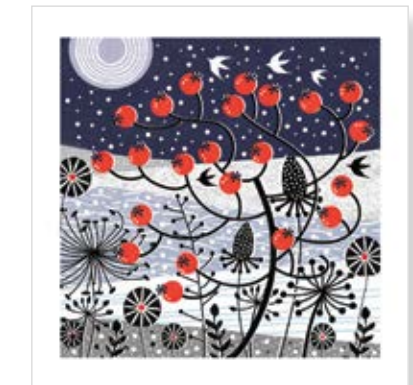
CFE X 190 PK
 Louise Cunningham – *Late Night Shopping*



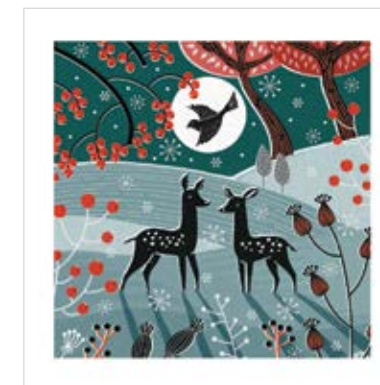
CFE X 189 PK
 Louise Cunningham – *Late Night Shopping*



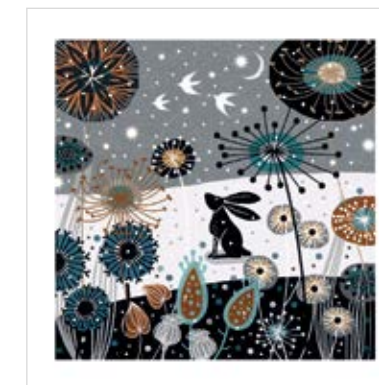
CFE X 187 PK
 Jo Parry – *Moonlight Robin*



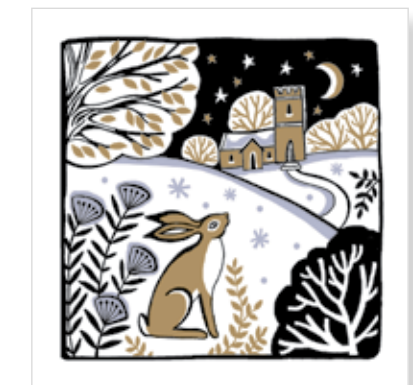
CFE X 188 PK
 Jo Parry – *Frosty Morning*



CFE X 137 PK
 Jo Parry – *Woodland Winter*



CFE X 138 PK
 Jo Parry – *Snowy Seed Heads*



CFE X 201 PK
 Deva Evans – *Country Hare*

Christmas Fayre

5.125" Square | Textured Board | White Env | Pack of 8 | Unit: 6 | Trade Price: \$4.975 | Unit Price: \$29.85 | SRP: \$9.95
 Inside Greeting Reads: 'Merry Christmas and a Happy New Year'



CFE X 202 PK
 Deva Evans – *Country Owl*



CFE X 183 PK
 Deva Evans – *Midnight Robin*



CFE X 184 PK
 Deva Evans – *Woodland Hare*



CFE X 186 PK
 Hui Skipp – *Festive Owls*

Christmas Fayre

5.125" Square | Textured Board | White Env | Pack of 8 | Unit: 6 | Trade Price: \$4.975 | Unit Price: \$29.85 | SRP: \$9.95
 Inside Greeting Reads: 'Merry Christmas and a Happy New Year'



CFE X 185 PK
 Hui Skipp – *Festive Foxes*



CFE X 135 PK
 Kate Findlay – *Snow Hamlet*



MGX 411873 PK
 Kate Findlay – *Bright Moon*



MGX 411866 PK
 Kate Findlay – *Snowy Perch*



MGX 340852 PK
 Lucy Grossmith – *Winter Walkers*



MGX 349183 PK
 Lucy Grossmith – *Deer in Midwinter*

Christmas Fayre

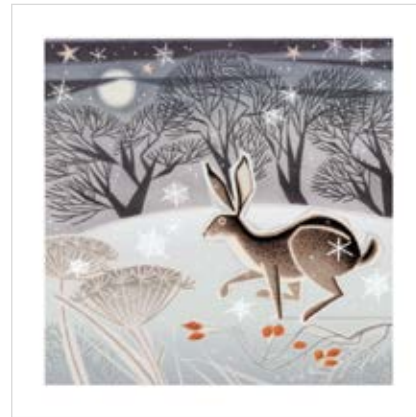
5.125" Square | Textured Board | White Env | Pack of 8 | Unit: 6 | Trade Price: \$4.975 | Unit Price: \$29.85 | SRP: \$9.95
 Inside Greeting Reads: 'Merry Christmas and a Happy New Year'



MGX 349268 PK
 Deva Evans – Owl and Teasels



MGX 373690 PK
 Jenny Tylden-Wright – Moonlit Flight



MGX 373706 PK
 Jenny Tylden-Wright – Hare in the Snow



MGX 373867 PK
 Lucy Grossmith – Robin in the Snow



MGX 411880 PK
 Kate Findlay – Moongazing

V&A Christmas

5.125" Square | Quality Boards | White Env | Pack of 8 | Unit: 6 | Trade Price: \$4.975 | Unit Price: \$29.85 | SRP: \$9.95
 Inside Greeting Reads: 'Merry Christmas and a Happy New Year'



VAE X 616 PK
 Prayers of an Angel



VAE X 617 PK
 Christmas Cracker Box Label



VAH X 620 PK
 Cranes in the Snow



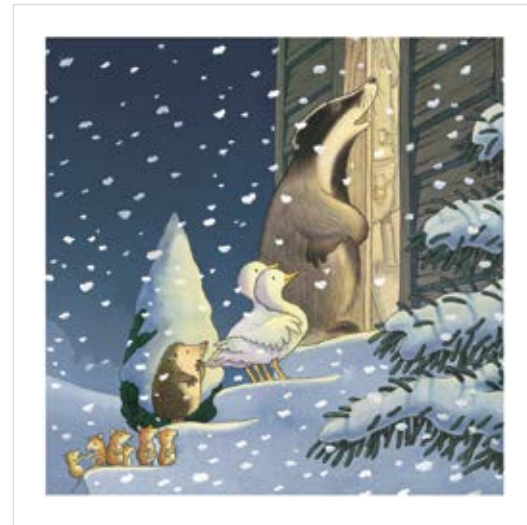
VAE X 600 PK
 Snowball Fight



VAE X 615 PK
 Holly Goose

Illustrated Christmas

5.125" Square | Textured Board | White Env | Pack of 8 | Unit: 6 | Trade Price: \$4.975 | Unit Price: \$29.85 | SRP: \$9.95
 Inside Greeting Reads: 'Merry Christmas and a Happy New Year'



ILU X 396 PK

Percy the Park Keeper – *One Snowy Night*



ILU X 397

Percy the Park Keeper – *Fox Playing the Icicles*

Christmas Classics

Our popular Christmas Classics range offers an unbeatable selection of Christmas art, religious and secular themes in 3 sizes.

Large Square: 6.5" Square | Coated Board | White Env | Pack of 5 | Unit: 6 | Trade Price: \$4.975 | Unit Price: \$29.85 | SRP: \$9.95
 Inside Greeting Reads: 'Merry Christmas and a Happy New Year'

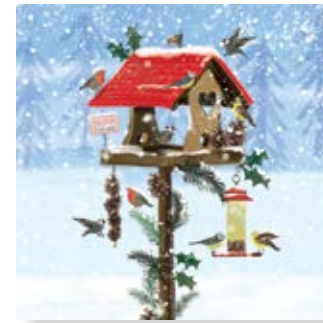


XPH 229 PK

Jo Spicer – *Winter Forest Glade*

Christmas Classics

Small Square: 5.125" Square | Coated Board | White Env | Pack of 8 | Unit: 6 | Trade Price: \$4.975 | Unit Price: \$29.85 | SRP: \$9.95
 Inside Greeting Reads: ● 'Season's Greetings' - ● 'With All Good Wishes for a Wonderful Christmas and a Happy New Year'



XPE 232 PK

● Karen Kane – *Festive Bird House*



XPE 224 PK

● Mary Stubberfield – *Winter Lookout*



XPE 226 PK

● Roy Thompson – *Little Hedgehog*



XPE 227 PK

Bex Parkin – *Dashing through the Snow*

Rectangle: 7 x 5" | Coated Board | White Env | Pack of 8 | Unit: 6 | Trade Price: \$4.975 | Unit Price: \$29.85 | SRP: \$9.95
 Inside Greeting Reads: ● 'Season's Greetings' - ● 'Merry Christmas and a Happy New Year'



XPB 235 PK

● Vintage Christmas – *Christmas Express*



XPB 234 PK

● Sarah Adams – *Puffins in the Snow*



XPB 233 PK

● Deva Evans – *Winter on the Farm*



XPB 223 PK

● Jim Mitchell – *Christmas Lights*



XPB 108 PK

● Fiona Scott Wilson – *Redwing Christmas*



XPB 222 PK

● Bex Parkin – *Winter Woods*

The British Library

Sourced from the extensive collections at the British Library and featuring a classic range of traditional seasonal imagery.

7 x 5" | Coated Board | White Env | Pack of 8 | Unit: 6 | Trade Price: \$4.975 | Unit Price: \$29.85 | SRP: \$9.95

Inside Greeting Reads: 'Merry Christmas and a Happy New Year'



BRI X 400 PK
A. Moor – Three Goldfinches



BRI X 373 PK
Cecil Aldin – Basses and Contraltos

Money Wallets

Money Wallets are a perfect way to send or give gift cards or money at Christmas. Featuring a tabbed insert to hold the contents inside and with a white envelope, they are postable as a small UK letter.

7 x 3.52" | Coated Board | Tabbed Insert | White Env | Blank Inside | Unit: 6 | Trade Price: \$2.25 | Unit Price: \$13.50 | SRP: \$4.50



GEK X 293
Josie Shenoy
Forest Christmas



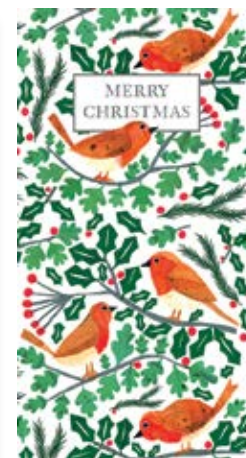
GEK X 294
Guess How Much I Love You
Little Nutbrown Hare and Holly



GEK X 289
Deva Evans
Moonlit Santa



GEK X 272
Deva Evans
12 Days of Christmas



GEK X 274
Tracey English
Robins & Holly

Christmas Boxed Cards



**MUSEUMS &
GALLERIES**

Luxury Square Notecard Wallets

5.25 x 5.25 x .5" | 6 Notecards | Blank | White Env | Unit: 6 | Trade Price: \$4.975 | Unit Price: \$29.85 | SRP: \$9.95

Branded Aperture Outer | Textured Board | Embossed with Gold or Silver Foiling as Marked

Inside Greeting Reads: ● 'Season's Greetings' - ● 'Merry Christmas and a Happy New Year' - ● 'With All Good Wishes for a Wonderful Christmas and a Happy New Year'



XFE 368

● V&A – *Cranes in the Snow*



XFE 372

● Deva Evans – *Country Hare*



XFE 371

● Paula Doherty – *Three Angels*



XFE 373

● Kat Lendacka – *Reindeer Decorations*



XFE 370

● Deva Evans – *Santa Over the Rooftops*



XFE 375

● Vintage Christmas – *Christmas Express*



XFE 374

● Jo Spicer – *Winter Forest Glade*

Illustrated Christmas Theme Pack

5.75 x 5.75 x 1" | 16 Cards | White Env | Unit: 6 | Trade Price: \$9.975 | Unit Price: \$59.85 | SRP: \$19.95 | 4 Each of 4 Designs

Inside Greeting Reads: 'Merry Christmas and a Happy New Year'



XIT 360 BX

Chris Dunn – *The Wind in the Willows*



Charity Theme Packs Square

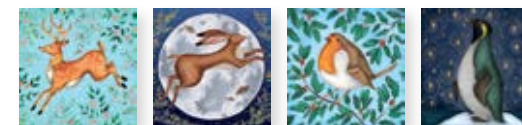
5.375 x 5.375 x 1.25" | 20 Cards | White Env | Unit: 6 | Trade Price: \$9.975 | Unit Price: \$59.85 | SRP: \$19.95 | 5 Each of 4 Designs

Inside Greeting Reads: 'Merry Christmas and a Happy New Year'



XETC 303

Catherine Rowe – *Animals in Winter*
Mixed Charity Pack



XETC 330

Bex Parkin – *Woodland Friends*
Mixed Charity Pack



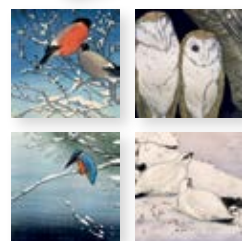
Theme Packs

Square

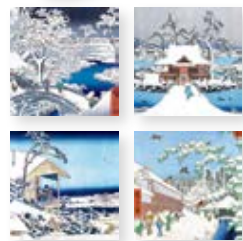
5.375 x 5.375 x 1.25" | 20 Cards | White Env | Unit: 6 | Trade Price: \$9.975 | Unit Price: \$59.85 | SRP: \$19.95 | 5 Each of 4 Designs
 Inside Greeting Reads: ● 'Season's Greetings' - ● 'Merry Christmas and a Happy New Year'



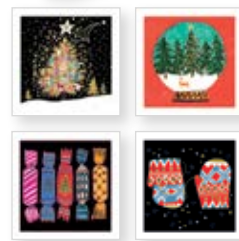
● XET 362
 Wild Press
 Winter Wild Press



● XET 351
 The British Museum
 Winter Bird Prints



● XET 222
 The British Museum
 Winter Woodcut Prints



● XET 218
 Louise Cunningham
 The Magic of Christmas

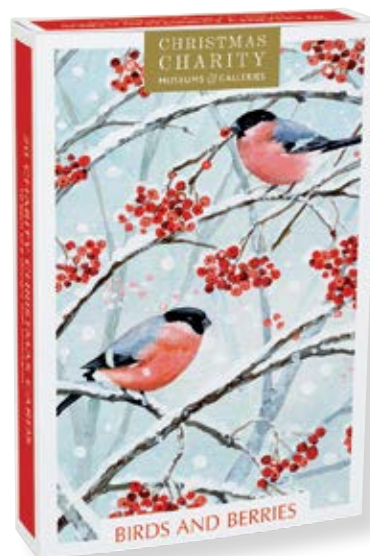
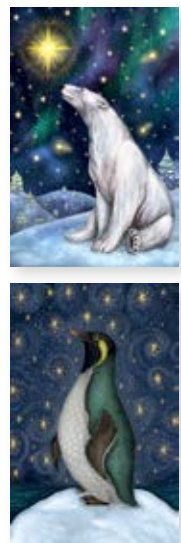
Charity Theme Pack

Small Rectangle

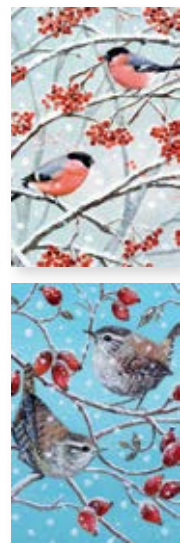
5.375 x 5.375 x 1.25" | 20 Cards | White Env | Unit: 6 | Trade Price: \$9.975 | Unit Price: \$59.85 | SRP: \$19.95 | 5 Each of 4 Designs
 Inside Greeting Reads: 'Merry Christmas and a Happy New Year'



XDTC 363
 Catherine Rowe – Stargazing
 Mixed Charity Pack



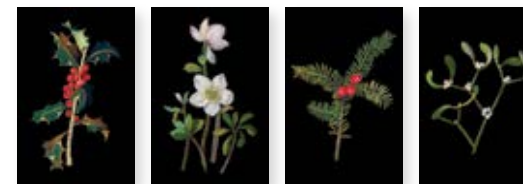
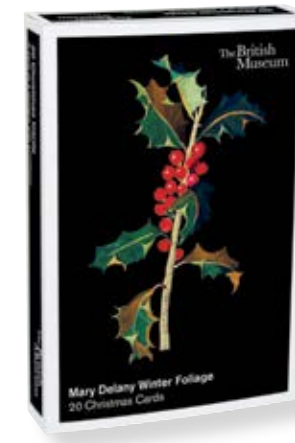
XDTC 311
 Lucy Grossmith – Birds and Berries
 Mixed Charity Pack



Theme Packs

Small Rectangle

4 x 6 x 1.25" | 20 Cards | White Env | Unit: 6 | Trade Price: \$7.975 | Unit Price: \$47.85 | SRP: \$15.95 | 10 Each of 2 Designs or 5 Each of 4 Designs
 Inside Greeting Reads: 'Merry Christmas and a Happy New Year'



XDT 350
 The British Museum – Mary Delany Winter Foliage



XDT 312
 Winter Birds

Charity Theme Pack

5x7" Rectangle

7.25 x 6.75 x 875" | 16 Cards | White Env | Unit: 6 | Trade Price: \$9.975 | Unit Price: \$59.85 | SRP: \$19.95 | 8 Each of 2 Designs
 Inside Greeting Reads: 'Merry Christmas and a Happy New Year'



XBTC 233 BX
 Catherine Rowe – Winter Hares
 Mixed Charity Pack



Theme Pack

5x7" Rectangle

7.25 x 6.75 x 8.75" | 16 Cards | White Env | Unit: 6 | Trade Price: \$7.975 | Unit Price: \$47.85 | SRP: \$15.95 | 8 Each of 2 Designs
Inside Greeting Reads: 'Merry Christmas and a Happy New Year'

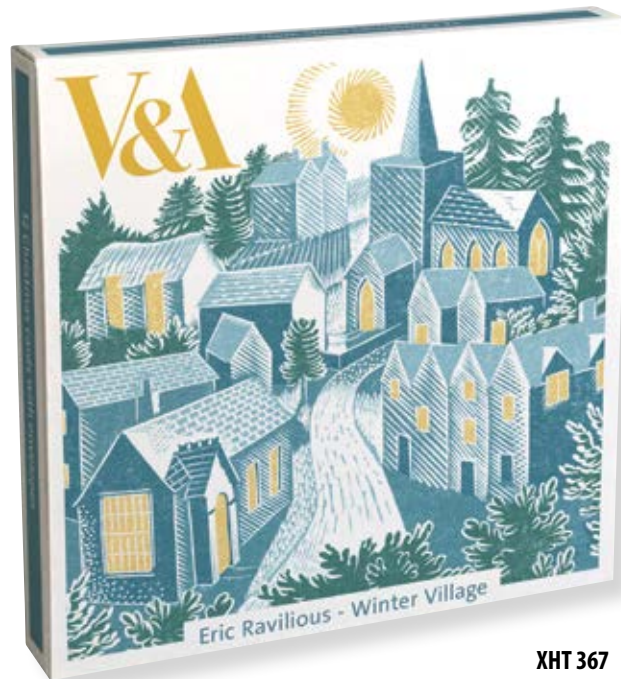


XBT 365
Winter Forest

Theme Pack

Large Square

6.75 x 6.75 x .875" | 12 Cards | White Env | Unit: 6 | Trade Price: \$6.975 | Unit Price: \$41.85 | SRP: \$13.95 | 6 Each of 2 Designs
Inside Greeting Reads: 'Season's Greetings'



XHT 367
V&A – Eric Ravilious Winter Village

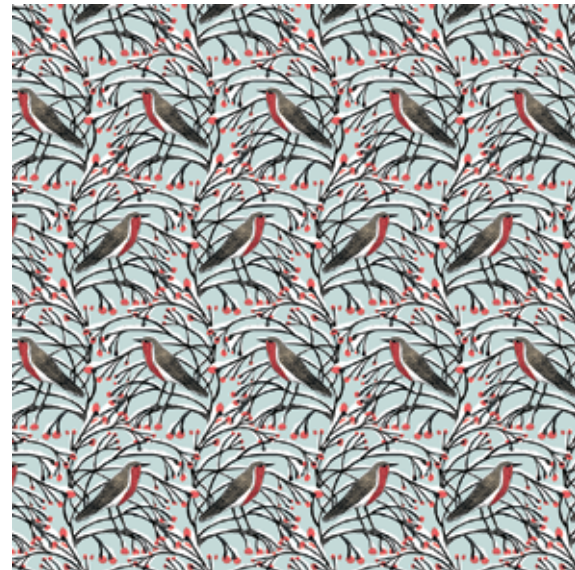
Home & Gift Packaging



**MUSEUMS &
GALLERIES**

Christmas Sheet Wrap

27.5 x 19.5" | Unit: 12 sheets | Trade Price: \$1.75 | Unit Price: \$21.00 | SRP: \$3.50



MGAX 503
Angela Harding – Robin & Berries

Christmas Gift Bags with Tags

Our range of Christmas gift bags with tags features best-selling designs, many with matching sheet wrap, tissue paper, roll wrap and gift tag sets. All of our new gift bags are now fully recyclable, including woven paper handles.

Large Bag:
12.5 x 10 x 5.25" | Unit: 6
Trade Price: \$3.475 | Unit Price: \$20.85 | SRP: \$6.95

Medium Bag:
9 x 7 x 4" | Unit: 6
Trade Price: \$2.975 | Unit Price: \$17.85 | SRP: \$5.95

Matching Sheet Wrap: **MGAX 503**
Matching Tissue Paper: **TIS X 488**
Matching Roll Wrap: **AR X 456**



BAL X 338
Angela Harding – We Three Hares

BAM X 336
Angela Harding – We Three Hares



Christmas Gift Bags with Tags

Large Bag: 12.5 x 10 x 5.25" | Unit: 6 | Trade Price: \$3.475 | Unit Price: \$20.85 | SRP: \$6.95
Medium Bag: 9 x 7 x 4" | Unit: 6 | Trade Price: \$2.975 | Unit Price: \$17.85 | SRP: \$5.95



BAL X 339
Angela Harding
Winter Woodland

BAM X 337
Angela Harding
Winter Woodland



Matching Tissue Paper: **TIS X 488** / Matching Roll Wrap: **AR X 456**



BAM X 269
Tracey English
Robins & Holly



BAL X 270
Tracey English
Robins & Holly

Matching Tissue Paper: **TIS X 488**
Matching Roll Wrap: **AR X 456**



BAL X 328
Catherine Rowe
Celestial Christmas Tree

Matching Tissue Paper: **TIS X 484**
Matching Gift Tag: **TAG X 419**

BAM X 330
Catherine Rowe
Celestial Christmas Tree



Christmas Gift Tag Sets

Backing Card: 5.5 x 4.375" | Unit: 6 | Trade Price: \$2.625 | Unit Price: \$15.75 | SRP: \$5.25
 Backing Card with Eurohook | 6 Gift Tags with Coordinating String | Coated Board | Tags Blank on Reverse for Message



TAG X 419
 Catherine Rowe – *Celestial Christmas Tree*

Christmas Tissue Paper

Pack: 12.25 x 3.75" / Sheet: 27.5 x 19.5" | Unit: 6 | Trade Price: \$2.975 | Unit Price: \$17.85 | SRP: \$5.95
 4 Sheets Of Printed Tissue Paper | New 'Zero Plastic' Packaging – Replacing Cellobag upon Reprint (per design) | Fold-Out Eurohook Hanger



TIS X 488
 Angela Harding – *Robin & Berries*



TIS X 484
 Catherine Rowe – *Celestial Christmas Tree*

Christmas Roll Wrap

Christmas roll wrap is a popular product in our festive gifting range.
 Featuring best-selling designs all with matching gift bags and sheet wrap.

Roll Wrap: Tube: 27.5 x 2" / Roll: 27.5" x 9.84' | Unit: 6 | Trade Price: \$4.975 | Unit Price: \$29.85 | SRP: \$9.95



AR X 456
 Angela Harding – *Robin & Berries*



AR X 454
 Catherine Rowe – *Celestial Christmas Tree*



AR X 401
 Louise Cunningham – *Winter Walkies*



AR X 434
 Deva Evans – *12 Days of Christmas*



AR X 405
 Catherine Rowe – *Christmas Garden*



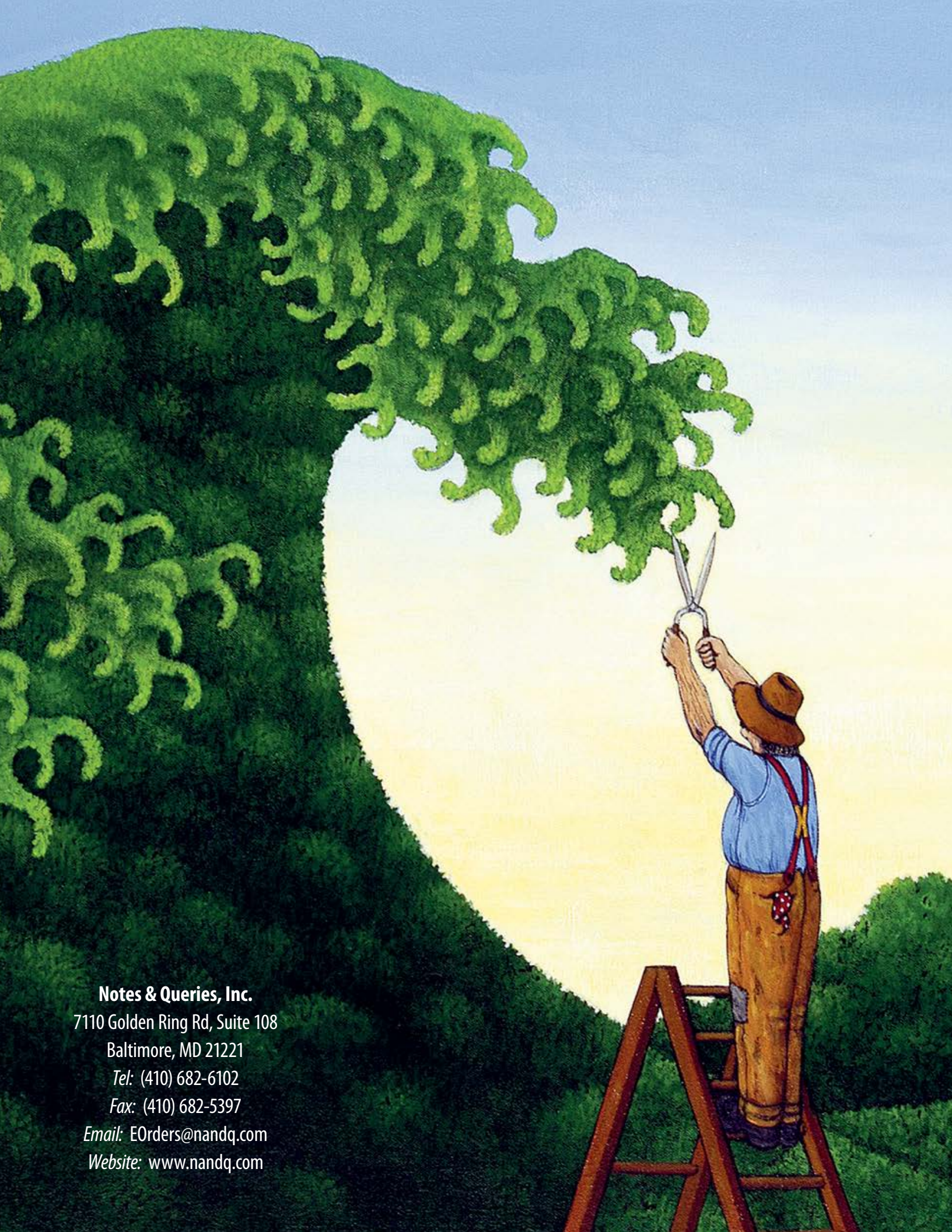
AR X 453
 Liza Lewis – *Nutcracker*

Point of Sale

If you are looking for a floor Christmas Display Program, we offer Museums & Galleries point of sale floor display unit.
This display is free of charge when filled with M&G festive Christmas packs. CDU measures 62.75" X 16.125" x 9.5".
It is designed to hold 24 designs of only the 5.25" or 5.5" square size packs.

144 Christmas Card Pack Program | Order No. PRG-SEAS144 | Order 144 Packs | 6 Each of 24 Designs | Display Unit Code: FDS907
Program Cost: Approx. \$716.40 (144 Pieces x \$4.975)
Retailer must pay freight on display





Notes & Queries, Inc.

7110 Golden Ring Rd, Suite 108

Baltimore, MD 21221

Tel: (410) 682-6102

Fax: (410) 682-5397

Email: EOrders@nandq.com

Website: www.nandq.com